

PRODUCT SPOTLIGHT

ATRO PARTS
ENGINEERED | DURABLE | RELIABLE
MANUFACTURED IN ST. CLAIR, MISSOURI | U.S.A.

FREIGHTLINER TUFTRAC® SUSPENSION

Designed for vocational uses including refuse, construction, asphalt spreader, heavy hauling, mining, logging, oil/gas field service and high-center-of-gravity applications; 40k, 46k and 52k capacities.

TufTrac® combines parabolic springs with elastomeric load cushions. The center elastomer load cushion acts as a pivot point to allow articulation while smoothing out the typically harsher ride experienced with spring-only suspensions. The end spring pads cushion the ride, especially when unladen, and reduce noise and vibration. This suspension design also raises the undercarriage components for more ground clearance.

The OE offers two options for the 40k and 46k models: TufTrac® and 2-Stage TufTrac®. The 2-Stage version uses a load cushion with a softer spring rate due to voids in the rubber material between the steel plates.

BENEFITS OF ATRO COMPONENTS

Upper and Lower Spring Pads:

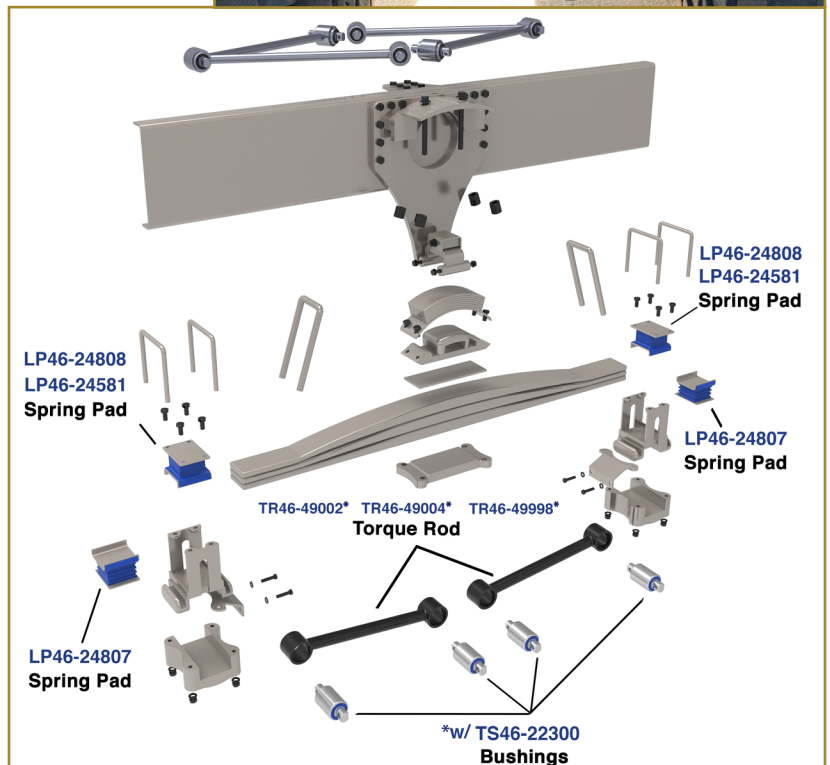
- Proprietary polyurethane formulated to absorb shock & dampen vibration for improved ride quality
- Updated design reduces stress within the part for better durability
- Resistant to dynamic compression set

Lower Torque Rods:

- ATRO's rotating torque rod bushing pin design reduces inventory costs by eliminating the need for 2 different torque rods for front & rear locations
- Rotating pin makes installation easier and eliminates torsional stresses

Torque Rod Bushings:

- OE bushings are snap ring retained; ATRO's bushings are press fit
- ATRO bushing sold separately; TS46-22300 to rebush ATRO torque rods only

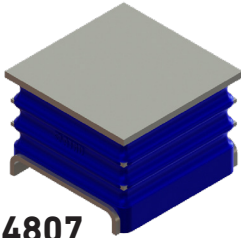


FREIGHTLINER TUFTRAC PARTS

ATRO PARTS

ENGINEERED | DURABLE | RELIABLE
MANUFACTURED IN ST. CLAIR, MISSOURI | U.S.A.

SPRING INSULATOR PADS



LP46-24807

Spring Insulator Pad, Lower
TufTrac® 40K, 46K

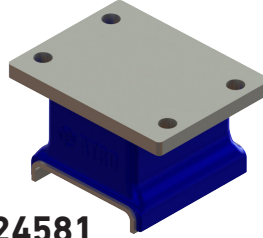
Replaces:

Freightliner 11-20807-000

Dimensions:

Height: 2 1/4"
Width: 3 7/8"
Length: 3 7/8"

Qty Per Vehicle: 4



LP46-24581

Spring Insulator Pad, Upper
TufTrac® 46K

Replaces:

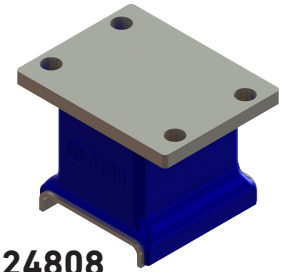
Freightliner 11-19581-000

Dimensions:

Height: 2 1/2"
Width: 4"
Length: 5 1/8"
Bolt Hole: 7/16"
Bolt Hole Pattern: 4 3/16" x 2 3/8"

Qty Per Vehicle: 4

Use with LP46-24807



LP46-24808

Spring Insulator Pad, Upper
TufTrac® 40K

Replaces:

Freightliner 11-20808-000

Dimensions:

Height: 3 3/16"
Width: 4"
Length: 5 1/8"
Bolt Hole: 9/16"
Bolt Hole Pattern: 4 3/16" x 2 3/8"

Qty Per Vehicle: 4

Use with LP46-24807

NOTE: Upper pads differ by height & bolt size,
as well as maximum load carrying capacity.

TORQUE RODS

ATRO's rotating pin design allows these torque rods to fit in both the front of rear & rear of rear applications.



TR46-49002

TufTrac® 54" axle spacing 40K

Replaces:

Freightliner 16-15002-000
Freightliner 16-15002-001

Length: 23 1/4" c-c

Contains:

(2) TS46-22300 Bushings*

Qty Per Vehicle: 2

TR46-49004

TufTrac® 60" axle spacing 46-52K

Replaces:

Freightliner 16-15004-000
Freightliner 16-15004-001

Length: 26 3/8" c-c

Contains:

(2) TS46-22300 Bushings*

Qty Per Vehicle: 2

TR46-49998

TufTrac® 56" axle spacing 46-52K

Replaces:

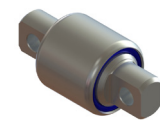
Freightliner 16-14998-000
Freightliner 16-14998-001

Length: 24 7/16" c-c

Contains:

(2) TS46-22300 Bushings*

Qty Per Vehicle: 2



TS46-22300

Torque Rod Bushing

Length: 4 3/8" c-c

Outside Dimension: 2 3/4"

Bolt Hole: 5/8"

Pin Width: .945"

* **TS46-22300 Torque Rod Bushing is exclusive to ATRO rods.**

CELEBRATING 30 YEARS
ATRO
POLYURETHANE • SOLUTIONS

POLYURETHANE PARTS | SOLUTIONS FOR HEAVY TRUCKS

ATROBUSHING.COM
©2017 ATRO ENGINEERED SYSTEMS, INC.

6 Bolte Lane
St. Clair, Missouri 63077 | U.S.A.
(800) 325.6114 | Fax (866) 920.2005