

PRODUCT SPOTLIGHT

ATRO PARTS
ENGINEERED | DURABLE | RELIABLE
MANUFACTURED IN ST. CLAIR, MISSOURI | U.S.A.

NEWAY ADZ® SUSPENSION

The Neway ADZ® is a heavy-duty on- and off-road drive axle air ride suspension. The upper control arms use the V-rod design. The lower control assembly has an integrated one-piece design to increase roll stability. In the front, it features an easy alignment pivot connection with a rotatable pivot collar for axle realignment while the rear of the assembly uses a solid connection between the cast trailing arm and transverse beam. The suspension is designed to accept disc or brake drums.

Heavy applications are typically front/rear mixers, construction, fire, aggregate dumps, logging, mining, oil & gas. Over-the-road applications include refuse, municipal, heavy haul and utility trucks.

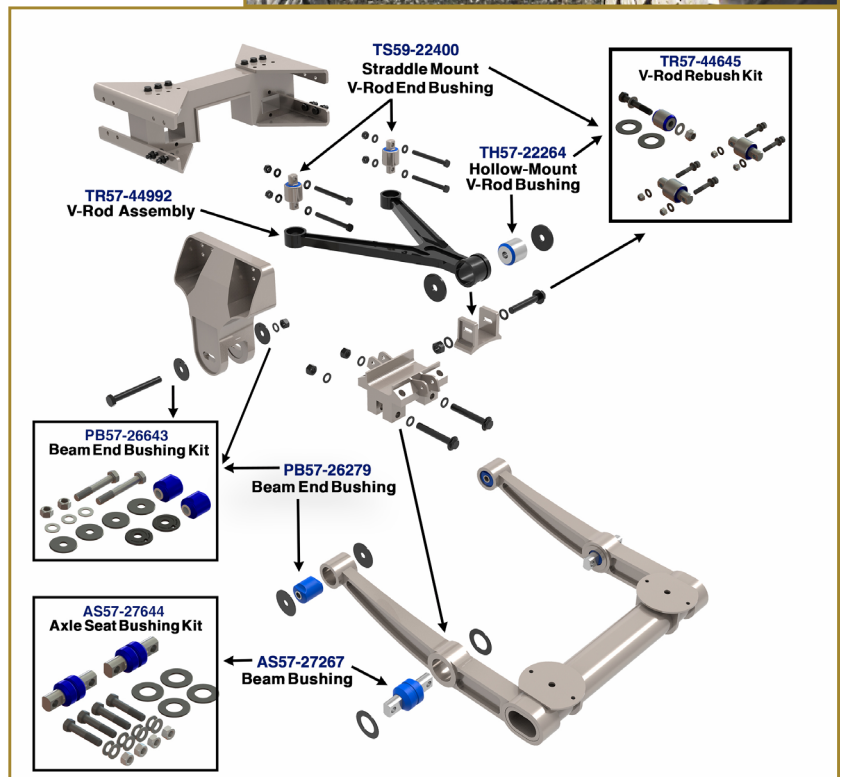
BENEFITS OF ATRO COMPONENTS

V-Rod Assembly & Bushings:

- High articulating V-Rod end bushings absorb conical motions and reduce bending stresses created by the vertical mounting of the end bushings
- Available as complete V-Rod Assembly (TR57-44992), V-Rod Rebush Kit (TR57-44645) or individual bushings (TH57-22264 & TS59-22400)
- ATRO sells Apex Bushing (TH57-22264) separately, not available through OE

Beam End & Beam Axle Seat Bushings:

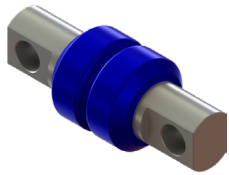
- Beam End Bushing Suspension Kit (PB57-26643) or individual bushings (PB57-26279)
- Beam Axle Seat Bushing Suspension Kit (AS57-27644) or individual bushings (AS57-26279)



NEWAY ADZ PARTS

ATRO PARTS

ENGINEERED | DURABLE | RELIABLE
MANUFACTURED IN ST. CLAIR, MISSOURI | U.S.A.

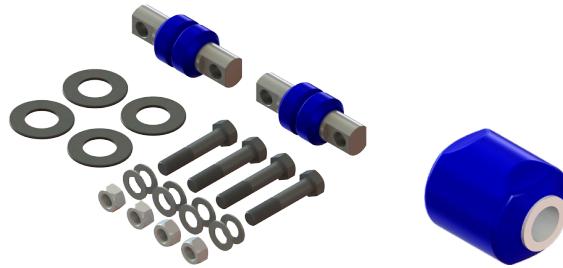


AS57-27267
Axle Seat Bushing

Replaces:
Holland/Neway 90008267

Dimensions:
Width: 1 1/2" Flat
Length: 8" OAL
Length: 6 1/4" c-c
OD: 3 1/8"
Pin OD: 2"
Bolt Hole: 1"

Qty Per Axle: 2



AS57-27644
Axle Seat Rebush Kit

Replaces:
Holland/Neway SRK-644
Holland/Neway 48100510

Kit Contains:
(2) AS57-27267 Bushings
(4) Spacers
(8) 1" Flat Washers
(4) 1"-8UNC, GR C Hex Locknut
(4) 1"-8UNCx5", GR 8 Hex Bolt

Qty Per Axle: 1



PB57-26643
Pivot Bushing Kit, Front

Replaces:
Holland/Neway SRK-643
Holland/Neway 48100509

Kit Contains:
(2) PB57-26279 Bushings
(4) Washer Spacers
(2) Alignment Pucks
(1) Bolt 1 1/8"-7x7"
(3) Washers
(2) Locknuts
(1) Bolt 1 1/8"-7x7.5"

Qty Per Axle: 1

PB57-26279
Pivot Bushing, Front

Replaces:
Holland 90008266

Dimensions:
Length: 3 7/8"
ID: 1 1/8"
OD: 3 3/16"

Qty Per Axle: 2



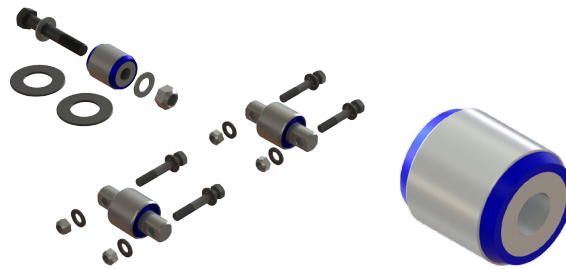
TR57-44992
V-Rod Assembly

Replaces:
Holland/Neway 90045702
Holland/Neway 90548900
Holland/Neway 90549992

Dimensions:
Length: 20 1/2" c-c (H/S*)
Length: 20 1/4" c-c (S/S**)
*H/S=Hollow/Straddle
**S/S=Straddle/Straddle

Contains:
(1) V-Rod
(2) TS59-22400 Bushings
(1) TH57-22264 Bushing

Qty Per Axle: 1



TR57-44645
V-Rod Rebush Kit

Replaces:
Holland/Neway SRK-645
Neway 48100511

Kit Contains:
(2) TS59-22400 Bushings
(1) TH57-22264 Bushing
(2) Spacer Shims
(1) 1-8UNC x 6" Bolt & Locknut
(4) 5/8-11UNC x 3 3/4" Bolt/Locknut
(2) 1" Washers
(8) 5/8" Washers

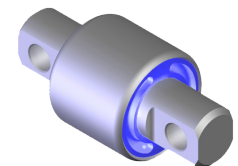
Qty Per Axle: 1

TH57-22264
Hollow Mount Apex Bushing

Replaces:
Neway 90008264
Neway 90008278

Dimensions:
Length: 2 7/8"
ID: 1"
OD: 2 3/4"

Qty Per Axle: 1



TS59-22400
Straddle End Bushing
(High Articulation)

Replaces:
Neway 90008265

Dimensions:
Length: 4 3/8" c-c
OD: 2 3/4"
Bolt Hole: 5/8"

Qty Per Axle: 2

NOTE: Bushing has increased conical motion & does not rotate

CELEBRATING 30 YEARS
ATRO
POLYURETHANE • SOLUTIONS

POLYURETHANE PARTS | SOLUTIONS FOR HEAVY TRUCKS

ATROBUSHING.COM
©2017 ATRO ENGINEERED SYSTEMS, INC.

6 Bolte Lane
St. Clair, Missouri 63077 | U.S.A.
(800) 325.6114 | Fax (866) 920.2005