

PRODUCT SPOTLIGHT

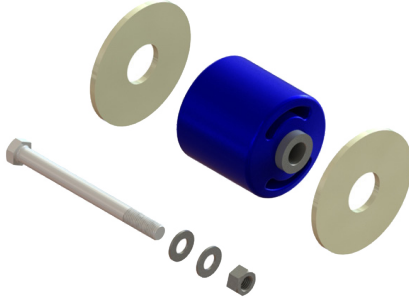
ATRO PARTS
ENGINEERED | DURABLE | RELIABLE
MANUFACTURED IN ST. CLAIR, MISSOURI | U.S.A.

HENDRICKSON AUXILIARY AXLE

PIVOT BUSHING KITS

PB50-36000

REGULAR BOLT



Dimensions

Length: 6 3/4"

ID: 1 1/8"

OD: 5 7/8"

Bolt: 7/8"

Kit Components

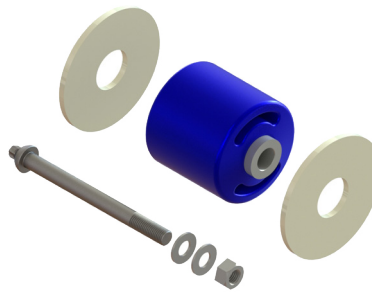
- (1) Pivot Bushing
- (2) Wear Washers
- (2) Flat Washers
- (1) Bolt
- (1) Locknut

Replaces:

S-24691

PB50-36001

SHEAR BOLT



Dimensions

Length: 6 3/4"

ID: 1 1/8"

OD: 5 7/8"

Bolt: 7/8"

Kit Components

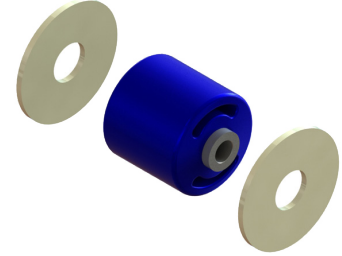
- (1) Pivot Bushing
- (2) Wear Washers
- (2) Flat Washers
- (1) SHEAR Bolt
- (1) Locknut

Replaces:

S-24691

PB50-36100

NO HARDWARE



Dimensions

Length: 6 3/4"

ID: 1 1/8"

OD: 5 7/8"

Kit Components

- (1) Pivot Bushing
- (2) Wear Washers

Replaces:

S-24691

ATRO's Pivot Bushings:

- Absorbs vertical forces
- Controls horizontal movement during braking and acceleration
- Increases roll stability when turning



PRODUCT SPOTLIGHT

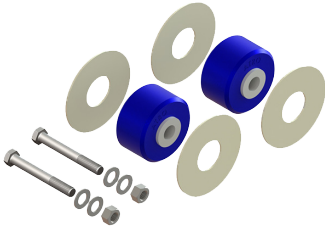
ATRO PARTS
ENGINEERED | DURABLE | RELIABLE
MANUFACTURED IN ST. CLAIR, MISSOURI | U.S.A.

HENDRICKSON AUXILIARY AXLE

PIVOT BUSHING KITS

PB50-36321

PIVOT BUSHING KIT, NARROW
REGULAR BOLT



Dimensions

Bushing Length: 1 1/4"
Bushing ID: 5 1/2"
Bushing OD: 3 5/8"

Kit Components

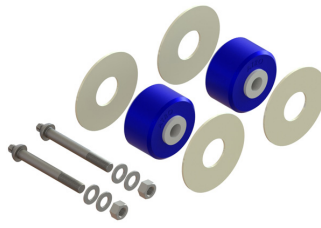
- (2) Pivot Bushings
- (4) Wear Washers
- (4) Flat Washers
- (2) Bolts
- (2) Locknuts

Replaces:

S-26321

PB50-36322

PIVOT BUSHING KIT, NARROW
SHEAR BOLT



Dimensions

Bushing Length: 1 1/4"
Bushing ID: 5 1/2"
Bushing OD: 3 5/8"

Kit Components

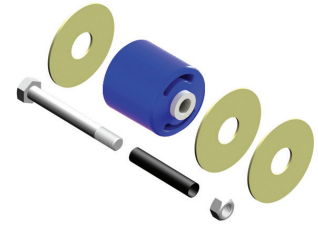
- (2) Pivot Bushings
- (4) Wear Washers
- (4) Flat Washers
- (2) SHEAR Bolts
- (2) Locknuts

Replaces:

S-26321

PB50-36914

PIVOT BUSHING KIT
REGULAR BOLT



Dimensions

Length: 6 3/4"
ID: 1 1/8"
OD: 5 7/8"
Bolt: 1 1/8"

Kit Components

- (1) Pivot Bushing
- (2) Wear Washers
- (1) Bolt Sleeve
- (1) Bolt
- (1) Locknut

Replaces:

A-6914

HW50-26679

HARDWARE KIT, SHEAR (LONG)

Kit Components

- (1) Shear Bolt;
7/8"-9X10" GR8
- (2) Washers, hardened
- (1) Locknut, GRC



HW50-26705

HARDWARE KIT, SHEAR (SHORT)

Kit Components

- (1) Shear Bolt;
7/8"-9X7" GR8
- (2) Washers, hardened
- (1) Locknut, GRC



MS50-26924

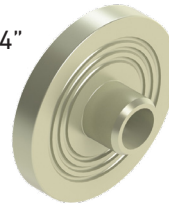
CONCENTRIC COLLAR

Dimensions

Length: 6 3/4"
ID: 1 1/8"
OD: 5 7/8"
Bolt: 7/8"

Replaces:

C-20924
S-20924



MS50-26925

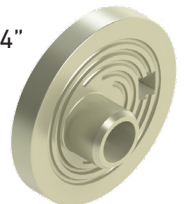
ECCENTRIC COLLAR

Dimensions

Length: 6 3/4"
ID: 1 1/8"
OD: 5 7/8"
Bolt: 7/8"

Replaces:

S-20925



CELEBRATING 30 YEARS
ATRO
POLYURETHANE • SOLUTIONS

POLYURETHANE PARTS | SOLUTIONS FOR HEAVY TRUCKS

ATROBUSHING.COM
©2017 ATRO ENGINEERED SYSTEMS, INC.

6 Bolte Lane
St. Clair, Missouri 63077 | U.S.A.
(800) 325.6114 | Fax (866) 920.2005

PS005-041318rev01

ATROBUSHING.COM | 1.800.325.6114

ATRO Engineered Systems, Inc. is not liable for any errors herein. All manufacturers' names and part numbers are used without permission; no endorsement, affiliation, or recommendation is implied. They are included for reference purposes only.