

PRODUCT SPOTLIGHT

ATRO PARTS
ENGINEERED | DURABLE | RELIABLE
MANUFACTURED IN ST. CLAIR, MISSOURI | U.S.A.

CHALMERS AFTERMARKET REPLACEMENT PARTS

LOAD SPRINGS

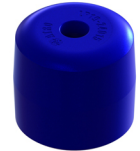
LP19-24002

Chalmers 15002
500, 600, 800
and 1100 Truck



LP19-24015

Chalmers 15015
1030 Series Truck
500 Series Trailer



LP19-24026

Chalmers 15026
800 Series



RESTRICTOR CANS

MS19-29028

Standard
Chalmers 373020
Chalmers 373028
600-800 Series



MS19-29029

High Stability
Chalmers 373021
Chalmers 373029
600-800 Series



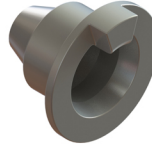
**COMING SOON
TO ATRO WEBSITE ...
CHALMERS TRAINING VIDEO**

ATROBUSHING.COM

SPIGOT CAPS

MS19-29002

Type 0
Chalmers 260002
600-800 Series



MS19-29055

Type 2
Chalmers 800055
600-800 Series



MS19-29201

Type 1
Chalmers 800201
600-800 Series



HARDWARE

HW19-29200

Type 0
Chalmers K880230



HW19-29201

Type 1
Chalmers K880640



HW19-29202

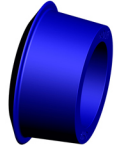
Type 2
Chalmers K880231



TORQUE ROD BUSHINGS

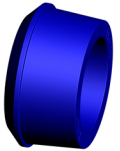
PL1046

Chalmers 800010
800/1000 Truck
700 Trailer



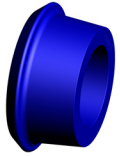
PL1047

Chalmers 22128
600/800/1000 Truck



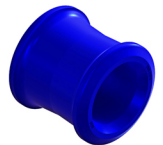
PL1049

Oversized OD
Chalmers 800009
800/1000 Truck



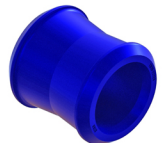
TH19-22010

Chalmers 800010
800 Truck
700 Trailer
1023/1030 Single Axle



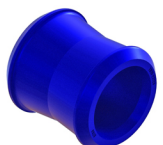
TH19-22128

Chalmers 22128
600/800/1000 Truck
300/500/700 Trailer



TH19-22129

Oversized
Chalmers 22129
600/800/1000 Truck
300/500/700 Trailer



SCHEMATIC ON BACK

AFTERMARKET REPLACEMENT PARTS

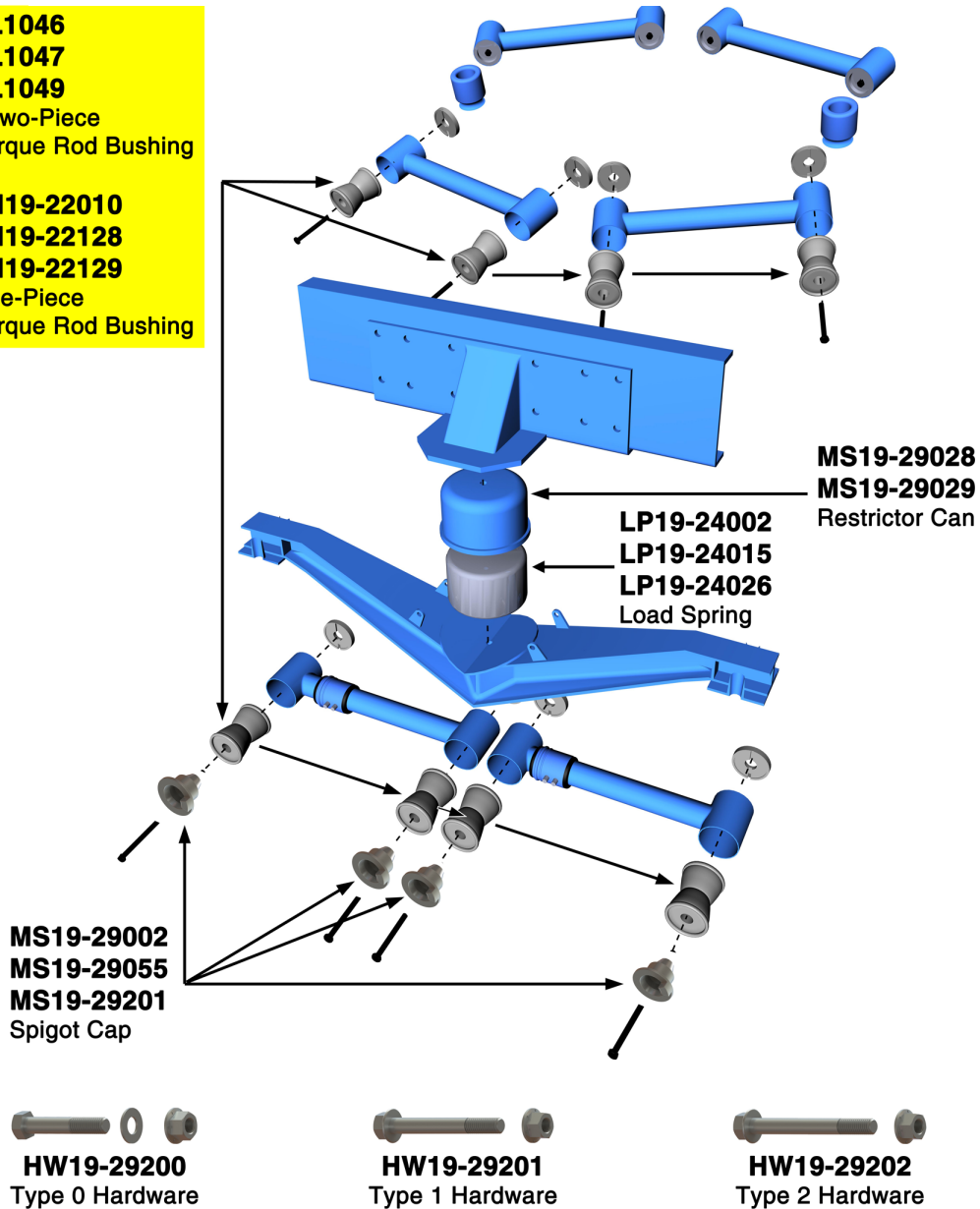
CHALMERS

ATRO PARTS

ENGINEERED | DURABLE | RELIABLE
MANUFACTURED IN ST. CLAIR, MISSOURI U.S.A.

PL1046
PL1047
PL1049
★Two-Piece
Torque Rod Bushing

TH19-22010
TH19-22128
TH19-22129
One-Piece
Torque Rod Bushing



★The ATRO two-piece design torque rod bushings allow for easier installation by eliminating the interference between the spigot and ID of the one piece bushing when installing the re-bushed torque rod. Simply slide one half of the two-piece bushing over opposite spigot ends, install the bare rod and install the second half of the bushings, caps and bolts.



6 Bolte Lane
St. Clair, Missouri 63077 USA
(800) 325-6114 • Fax (866) 920-2005
©2017 ATRO ENGINEERED SYSTEMS, INC.

PS005-082216

ATROBUSHING.COM | 1.800.325.6114

ATRO is not liable for any errors herein. All manufacturers' names and part numbers used are trademarked by the respective manufacturer. These names and part numbers are being used without permission. No endorsement, affiliation or recommendation is implied. They are included for reference purposes only. Some products shown here are covered by Canadian Patent 1,327,979; Australian Patent 630,358.