

Spring Pins Spring Pin Bushings

Precision. Durability. Reliability.

ATRO's new line of Spring Pins and Spring Pin Bushings delivers the precision and durability you expect from an industry leader. Made with American-produced steel and precision-machined, these parts are engineered to outperform and extend the life of your suspension.



ATRO Spring Pins and Spring Pin Bushings

Engineered for Superior Performance and Durability

Five reasons to choose ATRO Spring Pins and Bushings.

1. Made in the USA with Hardened Steel

Crafted from American-produced steel and built for maximum strength and durability in demanding conditions.

2. Made for Heavy-Duty Trucks

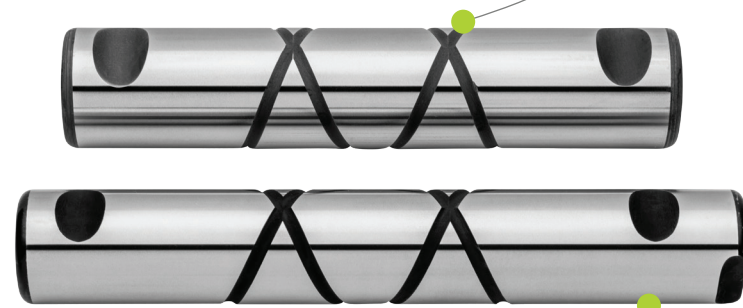
Engineered to withstand the rigors of continuous driving, cornering, and heavy loads.

3. Spiral Grooves Deliver Maximum Lubrication

The grease grooves reduce wear and binding, and keep the leaf spring functioning at peak performance.

4. Matched Fit on Threaded Pins and Bushings*

Both parts are machined in the same facility for quality, consistency, and better results on the suspension.



5. Precision Machined for a Better Fit

Precision machined and ground pins help ensure a better fit and smooth installation every time.



*Advantages of Threaded Pins and Bushings

1. Easier installation and replacement.
2. Will not shift side-to-side when worn.
3. Increased surface area and grease retention.
4. Longer service life for the pin and bushing.



ATRO Parts. Performance that drives your success.

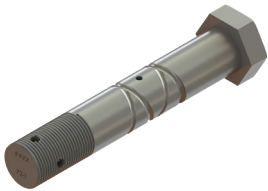
ATRO, LLC | 1 Rivers Edge Ct | St. Clair, MO 63077 USA | Phone (800) 325-6114

www.atrobushing.com

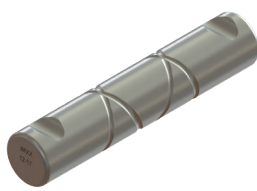
© 2025 ATRO, LLC

Spring Pins and Spring Pin Bushings

| Part # | Description | OEM Pin # | STEMCO Cross | Length | Outside Diameter | Center to Center | Thread | Associated Parts |
|---------|-----------------------------|---|--------------------|--------|------------------|------------------|-------------|------------------------|
| AA73-1 | Spring Pin - Hex Head | Advance Mixer | | 7.70 | | | 1-1/4-12 | SRI#RNI |
| AV24-2 | Spring Pin - Straight | 37121-0001 | BSP24-2 | 7.00 | 1.1235 | 5.485 C-C | | SRI#PLK |
| AF38-2 | Spring Pin - Straight | 16-12373-000 | BSP38-2 | 6.88 | 1.25 | 5.37 C-C | | SRI#RNK |
| AH46-2 | Spring Pin - Straight | 43146 | BSP46-2 | 6.87 | 1.3735 | 5.37 C-C | | SRI#TPK |
| AP49-1 | Spring Pin - Straight | 1661976C3, 3511254C1 | BSP49-1 | 6.75 | 1.2475 | 5.035 C-C | | SRI#RNK |
| AP50-1 | Spring Pin - Straight | 02-1767, 02-1781 | BSP50-1 | 6.85 | 1.246 | 5.31 C-C | | SRI#RNK |
| A075-1 | Spring Pin - Straight | 57613BX | | 4.95 | 1.123 | | | |
| AP12-17 | Spring Pin - Straight | 02-01561 | BSP12-17 | 6.26 | 1.2455 | 5.08 C-C | | SRI#RNK |
| AW58-1 | Spring Pin - Straight | 2044870 | BSP58-1 BSP68-1 | 6.25 | 1.1225 | 4.62 C-C | | |
| AM82-1 | Spring Pin - Straight | 023658F | | 5.87 | 0.998 | 4.53 C-C | | |
| AN31-6 | Spring Pin - Straight | 44QK173B | BSP31-6 | 6.25 | 1.249 | | | |
| AR39-1 | Spring Pin - Straight | Rosenbauer | | 6.88 | 1.2445 | 5.37 C-C | | |
| AS50-2 | Spring Pin - Straight | F7HZ-5780DB | BSP50-2 | 6.66 | 1.25 | 5.12 C-C | | SRI#RNK |
| AK70-1 | Spring Pin - Threaded | 5296 | BSP70-1 BSP75-1 | 7.37 | 1.062 | | 1 3/8"-6 | Use with ATB68 |
| AM83-1 | Spring Pin - Threaded | 1076334/1614230 | BSP83-1 | 7.03 | 1.493/1.178 | | M33.5X4 90° | Use with ATB77/ATB78 |
| A068-1 | Spring Pin - Threaded | 688952R1 | | 7.37 | 0.906 | 5.75 C-C | 1 3/8" | Use with ATB26 |
| A071-1 | Spring Pin - Threaded | 507203C1 | BSP71-1 | 7.37 | 0.804 | 5.75 C-C | 1 3/8"-6 | Use with ATB26 |
| AM79-1 | Spring Pin - Threaded | 16-12302-000 | BSP79-1 | 7.13 | 1.248/.997 | | 1 1/4-7" | Use with ATB73 |
| AM85-1 | Spring Pin - Threaded | 10QK3105M | BSP85-1 | 7.03 | 1.493/1.179 | | M33.5X4 90° | Use with ATB77/ATB78 |
| AM90-1 | Spring Pin - Threaded | 44QK26A | BSP90-1 | 6.66 | 1.062 | 5.01 C-C | 3/8"-6 | Use with ATB69 |
| ATB68 | Threaded Spring Pin Bushing | 5295 | BSG0068-1 | 4.00 | 1.753 | | 1 3/8"-6 | Use with AK70-1 |
| ATB77 | Threaded Spring Pin Bushing | B13-1000/52700-000 | | 4.12 | 1.7715 | | M33.5X4 90° | Use with AM83-1/AM85-1 |
| ATB26 | Threaded Spring Pin Bushing | 688951R1 | BSG0026-1 | 4.00 | 1.765 | | 1 3/8"-6 | Use with A068-1/A071-1 |
| ATB69 | Threaded Spring Pin Bushing | 10QK148A | BSG0069-1 | 3.50 | 1.765 | | 1 3/8"-6 | Use with AM90-1 |
| ATB73 | Threaded Spring Pin Bushing | 16-12301-000 | BSG0073-1 | 4.00 | 1.5025 | | 1 1/4-7" | Use with AM73-1 |
| ATB78 | Threaded Spring Pin Bushing | 10QK3114M, 10QK3115M, 1075724, 20409623 | | 4.00 | 1.7715 | | M33.5X4 90° | Use with AM83-1/AM85-1 |



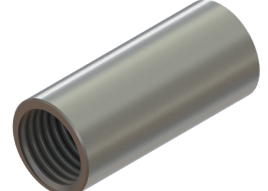
Spring Pin - Hex Head



Spring Pin - Straight



Spring Pin - Threaded



Threaded Spring Pin Bushing