

ATRO

ENGINEERED SYSTEMS

REFUSE HAULER GUIDE

800.325.6114 • ATROBUSHING.COM



CONTENTS

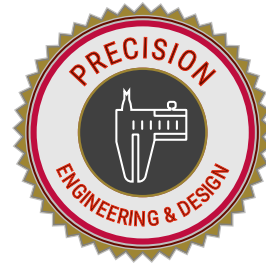
Free-Rotation Torque Rod Bushing	1
Torque Rod Finder.....	2

KINGPINS

Chevrolet.....	3
Dodge.....	3
Ford.....	3
GMC.....	4
International/Navistar.....	4
Mack.....	4
Rockwell/Meritor.....	4
Spicer/Dana/Eaton.....	5
Volvo.....	5
White/Westport.....	5

OEM

Refuse Body Parts & Driveline.....	6
Driveline.....	7
Autocar.....	7
Chalmers.....	8
Freightliner.....	9
Hendrickson.....	10
International.....	10
Kenworth.....	11
Mack.....	12
Neway.....	14
Peterbilt.....	14
Volvo.....	17



ATRO, LLC. is not liable for any errors herein. All manufacturers' names and part numbers are used without permission; no endorsement, affiliation, or recommendation is implied. They are included for reference purposes only.

FREE-ROTATION TORQUE ROD BUSHING

One Bushing Works Around the Clock

ATRO's free rotation polyurethane torque rod bushings outperform rubber bushings.

BENEFITS OF THE ROTATING PIN

- Faster, easier installation
- One rod fits any clocking angle*
- Eliminates bushing wind-up**
- Reduces stress on ENTIRE suspension
- Longer life means less downtime & fewer rods to stock



Scan QR code to watch video

* Pin can rotate a complete 360° to accommodate any clocking position.

** Wind-up occurs when the bonded rubber bushing is stretched in one direction while fighting to return to a relaxed state. This causes failures as the bushing tears away from the pin.

These benefits apply to both ATRO standard torque rods and small eye torque rods!!!

The polyurethane in the bushing is not effected by contaminates such oil, grease, diesel fuel, hydraulic fluids, road salt, cleaning solvents, etc.



Polyurethane is impervious to:

Oil/Grease
Brine
Cleaning Solutions
Hydraulic Fluids
Diesel Fuel



Rubber deteriorates when exposed to these contaminants.

TORQUE ROD FINDER

Identify Torque Rods Simple and Fast

ATRO has compiled a master database to simplify and expedite the process of finding replacement rods. Shorten the time at the counter and confirm the right part for your customer.

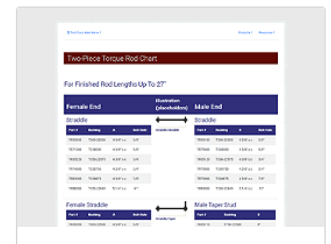
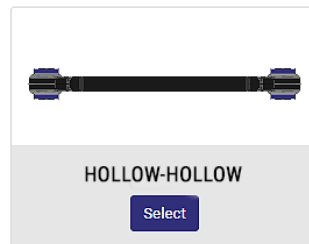
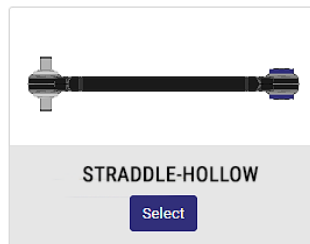
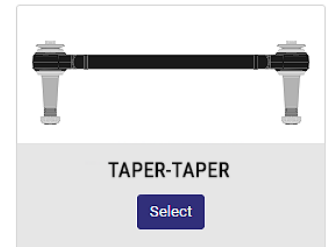
1 Visually identify the rod, specify the types of bushing, Straddle, Taper or Hollow



1 SELECT STYLE

2 SELECT LENGTH

3 FIND TORQUE ROD



2 Measure the rod to find the center to center length and enter

1 SELECT STYLE

2 SELECT LENGTH

3 FIND TORQUE ROD



Configuration:
Straddle - Straddle

Filter the C-C length

14 3/16" c-c	14.31" c-c	14 3/8" c-c	14.41" c-c	14 3/4" c-c	15 3/16" c-c	15 3/8" c-c
15 3/4" c-c	15 13/16" c-c	16 1/8" c-c	16 1/2" c-c	16 9/16" c-c	16 5/8" c-c	16 15/16" c-c
17 1/8" c-c	17 5/16" c-c	17 3/8" c-c	17 15/16" c-c	18 1/8" c-c	18 5/16" c-c	18.7" c-c
19 1/16" c-c	19 1/8" c-c	19 1/2" c-c	19 11/16" c-c	19 3/4" c-c	19 7/8" c-c	20" c-c
20 1/16" c-c	20 1/4" c-c	20.31" c-c	20 1/2" c-c	20 11/16" c-c	20 7/8" c-c	21" c-c

3 Results found with bushing and bolt hole detail

Scan QR code to go the Torque Rod Finder



1 SELECT STYLE

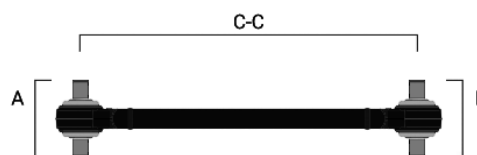
2 SELECT LENGTH

3 FIND TORQUE ROD

Configuration:

Straddle - Straddle
20 1/16" c-c Length

Notes:



TR50-42510

BUSHING A (TS38000)

LENGTH CC OD BOLT HOLE

BUSHING B (TS38000)

LENGTH CC OD BOLT HOLE

Premium No-Ream King Pin Repair Kits.



Spiral Steel



Bronze

Easy install. Less downtime. Longer life.

CHEVROLET									
SKS Spiral	SKB Bronze	QWIK	PLUS	King Pin Dimensions	Bushing/ Seal Tool	T-Handle	MODEL	AXLE	OEM NO.
SKS0893112	SKB0893112	KH931L	78.931.12	1.999 x 11.21	SKPTH931L	SKT060S or SKT060L	3 1/2 Ton - D90, F90, H90, J90, M90, T90, W90	16000# (FL-931)	2036352
SKS18005	SKB18005	K180E	70.180.05	1.872 x 9.96	SKPT147E	SKT090S or SKT090L	Top Kick - T - Series	EFA18F3 16000#	3927942 12541348
DODGE									
SKS Spiral	SKB Bronze	QWIK	PLUS	King Pin Dimensions	Bushing/ Seal Tool	T-Handle	MODEL	AXLE	OEM NO.
SKS0890112	SKB0890112	KH901L	78.901.12	1.999 x 11.04	SKPTH931L	SKT060S or SKT060L	4 Ton - C900, CN900, CT900, CNT900, NC900, NCT900, VL900, VLT900	16000#	
							5 Ton - C1000, CT1000, DN1000, DNT1000, LN1000, LNT1000	16000#	
FORD									
SKS Spiral	SKB Bronze	QWIK	PLUS	King Pin Dimensions	Bushing/ Seal Tool	T-Handle	MODEL	AXLE	OEM NO.
SKS0890112	SKB0890112	KH901L	78.901.12	1.999 x 11.04	SKPTH931L	SKT060S or SKT060L	800-850-880 Series	16000# Air Brakes	D0HZ-3111E
								18000# Hydraulic Brakes	D0HZ-3111E
								20000#	D0HZ-3111E
							900-950 Series	16000# Air Brakes	D0HZ-3111E
								18000# Hydraulic Brakes	D0HZ-3111E
								20000#	D0HZ-3111E
SKS0893106	SKB0893106	KH931F	78.931.06	1.999 x 11.21	SKPTH931L	SKT060S or SKT060L	800-850-880 Series	16000# Air Brakes	D5HZ-3111C
								18000# Air Brakes	D5HZ-3111C
								20000#	D5HZ-3111C
							900-950 Series	16000# Air Brakes	D5HZ-3111C
								18000# Air Brakes	D5HZ-3111C
								20000#	D5HZ-3111C

GMC									
SKS Spiral	SKB Bronze	QWIK	PLUS	King Pin Dimensions	Bushing/ Seal Tool	T-Handle	MODEL	AXLE	OEM NO.
SKS0890112	SKB0890112	KH901L	78.901.12	1.999 x 11.04	SKPTH931L	SKT060S or SKT060L	7500 Series	18000# (FL-901)	2452865
							8500 Series	18000# (FL-901)	2452865
							9500 Series	18000# (FL-901)	2452865
SKS0893112	SKB0893112	KH931L	78.931.12	1.999 x 11.21	SKPTH931L	SKT060S or SKT060L	9500 Series	18000# (FL-931)	2036352
SKS18005	SKB18005	K180E	70.180.05	1.872 x 9.96	SKPT147E	SKT090S or SKT090L	KODIAK - C Series	EFA18F3 16000#	12541348
SKS18118	SKB18118	K181R	70.181.18	1.999 x 11.21	SKPTH931L	SKT060S or SKT060L	KODIAK - C Series	16000# (FH4)	88936136
INTERNATIONAL/NAVISTAR									
SKS Spiral	SKB Bronze	QWIK	PLUS	King Pin Dimensions	Bushing/ Seal Tool	T-Handle	MODEL	AXLE	OEM NO.
SKS0890112	SKB0890112	KH901L	78.901.12	1.999 x 11.04	SKPTH931L	SKT060S or SKT060L	With Rockwell Axles:	18000# FL-901	303140C92
									870148R92
								18000# FA-136	303140C92
SKS0893112	SKB0893112	KH931L	78.931.12	1.999 x 11.21	SKPTH931L	SKT060S or SKT060L	With Rockwell Axles:	18000# FL-931 FL-941	474520C91
								16000# FA-231	474520C91
								18000# FA-232	474520C91
SKS18018	SKB18018	K180R	70.180.18	1.999 x 11.21	SKPTH931L	SKT060S or SKT060L	With Rockwell Axles:	18000# 02-ARU	2505495C91
MACK									
SKS Spiral	SKB Bronze	QWIK	PLUS	King Pin Dimensions	Bushing/ Seal Tool	T-Handle	MODEL	AXLE	OEM NO.
SKS0890112	SKB0890112	KH901L	78.901.12	1.999 x 11.04	SKPTH931L	SKT060S or SKT060L	With Rockwell Axles:	18000# FL-901	205SQ12
SKS53613		K536M		2.360 x 8.92			DM, RM, DUMP, MIXER, CONSTRUCTION, REFUSE	18000# FXL18	301SQ53
								20000# FXL20	301SQ53
SKS61613		K616M	70.616.13	2.125 x 8.75			DM, RM, DUMP, MIXER, CONSTRUCTION, REFUSE	18000# FA-616	301SQ52
								FA-617	
								20000# FA-616	301SQ52
								FA-617	
ROCKWELL/MERITOR									
SKS Spiral	SKB Bronze	QWIK	PLUS	King Pin Dimensions	Bushing/ Seal Tool	T-Handle	MODEL	AXLE	OEM NO.
SKS0890112	SKB0890112	KH901L	78.901.12	1.999 x 11.04	SKPTH931L	SKT060S or SKT060L	Non-Driving Front Steering Axles	16000# FH-901	168, 170
							Non-Driving Front Steering Axles	18000# FL-901	168, 170
SKS0893112	SKB0893112	KH931L	78.931.12	1.999 x 11.21	SKPTH931L	SKT060S or SKT060L		18000# FL-931, FL-933, FL-941, FL-943, FL-951	R200198, R201312
								18000# FL-931	
								FL-933, FL-941	198, 1312
								FL-943, FH-951	
							20000#	R201477	
							16000#		
SKS18018	SKB18018	K180R	70.180.18	1.999 x 11.21	SKPTH931L	SKT060S or SKT060L	Non-Driving Front Steering Axles	MFS-161015	R201475
								MFS-16122A	
							MFS-16143A		
							Non-Driving Front Steering Axles	18000#	R201475
								MFS-18143A	
SKS18118	SKB18118	K181R	70.181.18	1.999 x 11.21	SKPTH931L	SKT060S or SKT060L	Non-Driving Front Steering Axles	16000#	R201476
								MFS-16133A	
							Non-Driving Front Steering Axles	18000#	R201476
							MFS-18133ANN		
							Non-Driving Front Steering Axles	20000#	R201476
								MFS-20133ANN	
SKS20018		K200R		1.999 x 10.79	SKPTH931L	SKT060S or SKT060L	Non-Driving Front Steering Axles	18000# MFS-18133Ank	R201482
								20000# MFS-20133Ank	R201482

SPICER/DANA/EATON									
SKS Spiral	SKB Bronze	QWIK	PLUS	King Pin Dimensions	Bushing/ Seal Tool	T-Handle	MODEL	AXLE	OEM NO.
SKS16019	SKB16019	K160S	70.160.19	2.046 x 11.00	SKPT141S	SKT060S or SKT060L	02 CODES	16000# 02-ADH, 02-AEU, 02-AEV, 02-AEW, 18000# 02-ADJ, 20000# 02-ADK	220KK100, 1685405C91
							I CODES	16000# I-160S, I-160W 18000# I-180S, I-180W 20000# I-200S, I-200W 22000# I-220S, I-220W	220KK100, 1685405C91, 329023
SKS18005	SKB18005	K180E	70.180.05	1.872 x 9.96	SKPT147E	SKT090S or SKT090L	EFA CODES	18000# EFA18F3, EFA18F4, 20000# EFA20F4, 22000# EFA22T2, EFA22T5, 24000# EFA24T2, EFA24T5	811525, 1008500, 329432, 329433, 329434
SKS18018	SKB18018	K180R	70.180.18	1.999 x 11.21	SKPTH931L	SKT060S or SKT060L	02 CODES	18000# 02-ARU	2505495C91
SKS18118	SKB18118	K181R	70.181.18	1.999 x 11.21	SKPTH931L	SKT060S or SKT060L	02 CODES	18000# 02-ARZ, 02-ARY	
SKS20019		K200S		2.046 x 10.07	SKPT141S	SKT060S or SKT060L	D CODES	20000# D2000F, 22000# D2200F	331434
SKS20119		K201S		2.046 x 10.07	SKPT141S	SKT060S or SKT060L	D CODES	20000# D2000F, 22000# D2200F	331435
VOLVO									
SKS Spiral	SKB Bronze	QWIK	PLUS	King Pin Dimensions	Bushing/ Seal Tool	T-Handle	MODEL	AXLE	OEM NO.
SKS53613		K536M		2.360 x 8.92				18000# FXL18 20000# FXL20	301SQ53 301SQ53
WHITE/WESTPORT									
SKS Spiral	SKB Bronze	QWIK	PLUS	King Pin Dimensions	Bushing/ Seal Tool	T-Handle	MODEL	AXLE	OEM NO.
SKS0890112	SKB0890112	KH901L	78.901.12	1.999 x 11.04	SKPTH931L	SKT060S or SKT060L	Trend Models	18000# (FL-901) 16000# (FH-901)	1720728, 1739844, 168, 170

STEER KING™

by ATRO



SHOP-READY BOX PREVENTS CONTAMINATION



IMPROVED LUBRICATION USING ENGINEERED GROOVES ON ALL KINGPINS



SAVE TIME WITH PRE-PACKED BEARINGS



EXCLUSIVE BI-DIRECTIONAL LIP SEALS PREVENT AIRLOCK

REFUSE BODY PARTS

MS99-69013

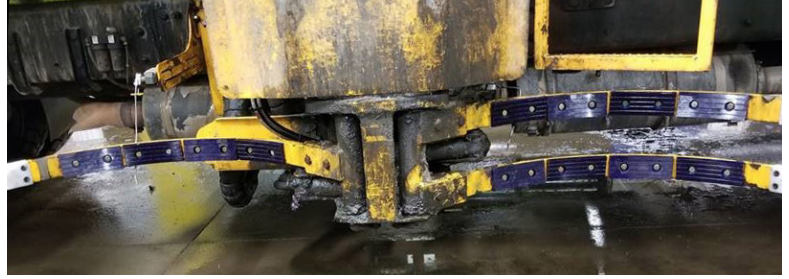
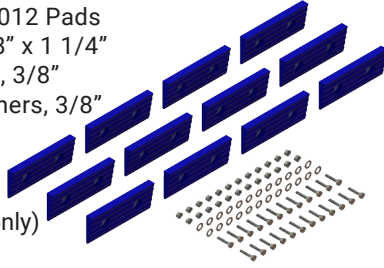
Gripper Pad Kit w/Hardware

Contains: (12) MS99-69012 Pads
 (24) Bolts, 3/8" x 1 1/4"
 (24) Locknuts, 3/8"
 (24) Flat Washers, 3/8"

Qty Per Vehicle: 1

Cross References

Labrie: BCB01485 (pad only)



NOTE: These pads are super high wear items, with rubber being replaced 2-3 times a year. Individual pads are available.

BP99-65535

Bumper/Arm Stop

Height: 2 13/16"
 Width: 4 1/2"
 Length: 9"
 Bolt Hole: 5/8"
 Bolt Holes 5" c-c
 Qty Per Vehicle: 2



Cross References

Heil: 1411535 Half Pack

MS99-65035

Bumper Pad

Height: 3"
 Width: 6"
 Length: 7 7/8"
 Bolt Hole Pattern:
 5 1/2"x 3 1/8"x 1/2"
 Qty Per Vehicle: 4



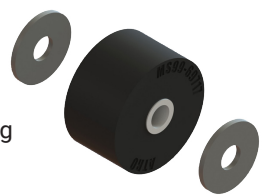
Cross References

McNeilus: 0602035

MS99-69717

Grabber Assembly Roller

ID: 1/2"
 OD: 2 1/2"
 Width: 1 7/16"
 Contains:
 (1) Roller Bushing
 (2) Washers



Cross References

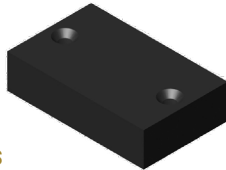
Heil: 0620717

McNeilus: 1108125

MS99-69779

Bumper Pad

Width: 2"
 Length: 3 1/4"
 Thickness: 13/16"



Cross References

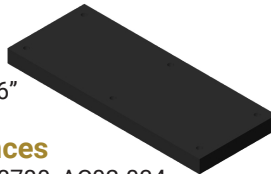
Curotto Can: 1238779, AC02-036

NOTE: No Warranty

MS99-69780

Bumper Pad

Width: 4"
 Length: 10"
 Thickness: 11/16"



Cross References

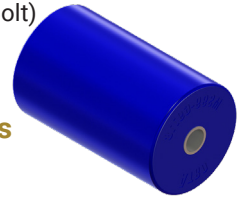
Curotto Can: 1238780, AC02-034

NOTE: No Warranty

MS99-69718

Gripper Roller

ID: 1/2" (1/2" Bolt)
 OD: 2 1/2"
 Length: 4"



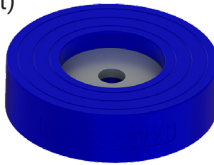
Cross References

Amrep: 1451717

MS99-69720

Gripper Pad, Small Round

ID: 1/2" (1/2" Bolt)
 OD: 4"
 Height: 1 1/16"



Cross References

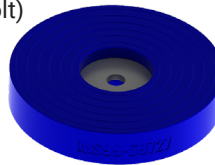
Amrep: 1451720

NOTE: Metal washer molded in

MS99-69727

Gripper Pad, Large Round

ID: 1/2" (1/2" Bolt)
 OD: 5 13/16"
 Height: 1 1/16"



Cross References

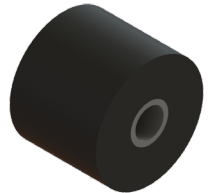
Amrep: 1451727

NOTE: Metal washer molded in

MS99-69804

Roller Gripper

OD: 2 1/2"
 Width: 2"
 ID Bolt Size: 5/8"
 Qty Per Vehicle: Varies



Cross References

Heil: 062804, 0620805(takes 2)

PB00-26839

Lift Axle Bushing Kit

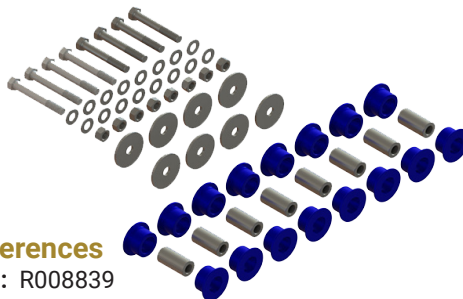
Contains: (16) PB00-36314 Bushings
 (8) Inner Sleeves
 (4) Bolts 3/4" x 5"
 (4) Bolts 3/4" x 5 1/2"
 (8) Locknuts
 (16) Washers
 (8) Shim Washers

Qty Per Vehicle: 1

Cross References

Hendrickson: R008839

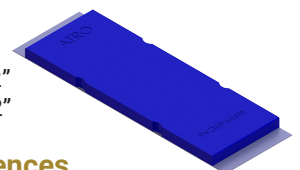
Watson Chalin: SRK1190-1



WP99-69CA6

Gripper Pad

Width: 4"
 Length: 12 1/2"
 Thickness: 1/2"



Cross References

Faris Machinery: CA60

DRIVELINE

CR00-67121

Carrier Bearing Assembly

Assembly Dimensions:

Height: 6 5/16"

Width: 2 1/4"

Length: 9 1/4"

Bearing Dimensions:

ID: 50mm

Center Height: 2 25/32"

Bolt Holes: 7 5/8" c-c

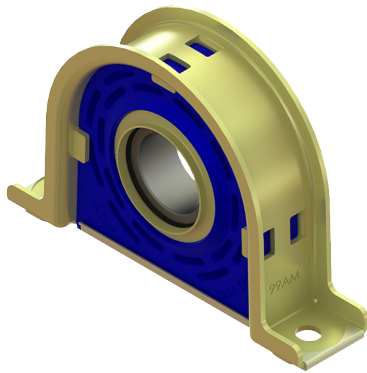
Bolt Size: 1/2"

Qty Per Vehicle: 1

Cross References

Spicer: 210121-1X

Model: 1710 Series



CR00-67825

Carrier Bearing Assembly

Assembly Dimensions:

Height: 7 1/4"

Width: 3"

Length: 10"

Bearing Dimensions:

ID: 60mm

Center Height: 3 1/4"

Bolt Holes: 8 5/8" c-c

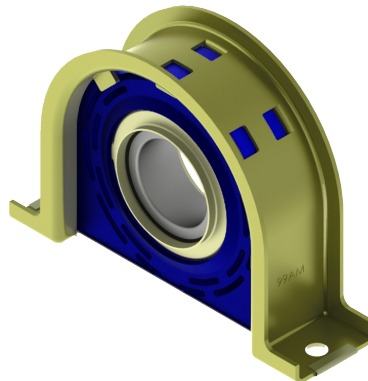
Bolt Size: 1/2"

Qty Per Vehicle: Varies, Typically 1

Cross References

Spicer: 2106611-1X

Model: 1810 Series



CR00-67661

Carrier Bearing Assembly, Self-Centering

Assembly Dimensions:

Height: 7 5/8"

Width: 3 3/4"

Length: 10"

Bearing Dimensions:

ID: 60mm

Center Height: 3 3/8"

Bolt Holes: 8 5/8" c-c

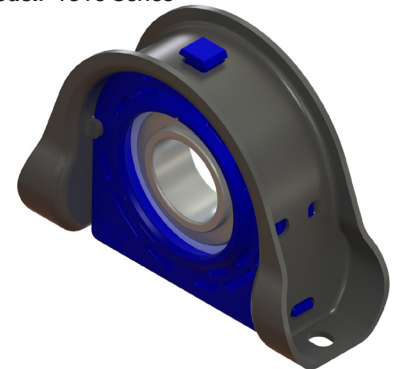
Bolt Size: 1/2"

Qty Per Vehicle: Varies, Typically 1

Cross References

Spicer: 5003323

Model: 1810 Series



AUTOCAR

MM96-62657-HT

Engine Mount (High Temp)

Length: 3"

Inner Diameter: 1 1/2"

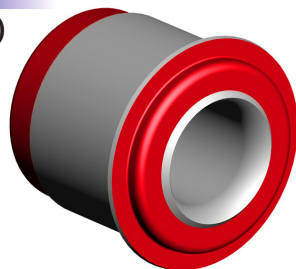
Small Outside Diameter: 3"

Qty Per Vehicle: 2

Cross References

Autocar: 8077380

Model: ISL Engines



TM99-63506

Transmission Mount

Height: 1 7/8"

Width: 2 7/8"

Length: 4 3/4"

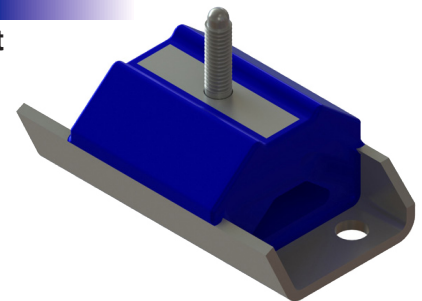
Bolt Hole: 15/32"

Bolt Holes: 3 3/4" c-c

Stud: M10x1.5

Cross References

Autocar: PA014-052013



TR13-41022

Torque Rod

Length: 22" c-c

Bushings: TS38000/TT38000

Qty Per Vehicle: typically 2

Cross References

Autocar: 35801-0033



TR13-41635

Torque Rod

Length: 25" c-c

Bushings: TS59-22400/TT38000

Qty Per Vehicle: typically 2

Cross References

Autocar: A3580010-635, S3580001-635, S3580003-635

NOTE: TS59-22400 is High Articulation Bushing



The above ATRO's rods solve a problem of breaking rods some trucks have experienced.

CHALMERS

HW19-29201

Bolt Kit Type "1" Joint

Length: 5" Bolt

OD: 5/8" Bolt

Qty Per Vehicle: 16

Contains: (1) Flanged Bolt
(1) Flanged Locknut



Cross References

Chalmers: HDW379, HDW381, K880640
Model: 800 Series

HW19-29202

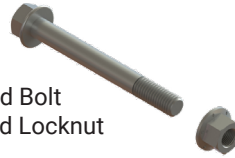
Bolt Kit Type "2" Joint

Length: 5 1/2" Bolt

OD: 5/8" Bolt

Qty Per Vehicle: 16

Contains: (1) Flanged Bolt
(1) Flanged Locknut



Cross References

Chalmers: HDW379, HDW382, K880231
Model: 800 Series

LP19-24002

Load Spring

Height: 8"

ID: 2"

OD: 9 1/2"

Qty Per Vehicle: 2



Cross References

Chalmers: 15002
Model: 800 Series, 40K-58K

LP19-24010

Load Spring

Height: 8"

ID: 2"

OD: 6 3/4"

Qty Per Vehicle: 2



Cross References

Chalmers: 15010
Model: 500 & 1000-23K

LP19-24015

Load Spring

Height: 8"

ID: 2"

OD: 8 1/4"

Qty Per Vehicle: 2



Cross References

Chalmers: 15015
Model: 1000-30K, 500 Series Trailer

LP19-24026

Load Spring

Height: 8"

ID: 2"

OD: 10 1/2"

Qty Per Vehicle: 2



Cross References

Chalmers: 15026
Model: 800 Series 65,000 lbs. & Up

ATRO **Rubber**

ATRO's load springs are chemically resistant and will not take a permanent compression set like rubber, keeping ride height accurate and driveline angles in spec.

MS19-29028

Restrictor Can, Standard

Height: 4 7/16"

OD: 12 5/8"

Qty Per Vehicle: 2



Cross References

Chalmers: 373028, 373020
Model: 800 Series

MS19-29029

Restrictor Can, High Stability

Height: 5 3/16"

OD: 11 5/8"

Qty Per Vehicle: 2



Cross References

Chalmers: 373021, 373029
Model: 800 Series

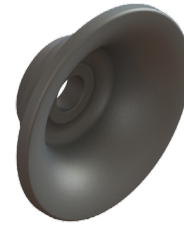
MS19-29201

Spigot Cap, Type 1

ID: 5/8" Bolt

OD: 4"

Qty Per Vehicle: 16



Cross References

Chalmers: 800201
Model: 800 Series

MS19-29055

Spigot Cap, Type 2

ID: 5/8" Bolt

OD: 4 1/2"

Qty Per Vehicle: 16



Cross References

Chalmers: 800055
Model: 800 Series

Scan QR code
for info on
Chalmers
800 Series



KT19-22001

Torque Rod Bushing Kit

Length: 1 15/16"

ID: 2 7/16"

Small OD: 3 1/4"

Large OD: 3 5/8"

Qty Per Vehicle: 1



Cross References

Chalmers: 22128, 22128CS1
Model: 800 Series, 40K

CONTAINS: 32 each - PL1047

16 piece kit also available: KT19-22000

KT19-22003

Torque Rod Bushing Kit

Length: 2 1/8"

ID: 2 9/16"

Small OD: 3 9/16"

Large OD: 4 5/16"

Qty Per Vehicle: 1



Cross References

Chalmers: 800010, 800010CS1
Model: 800 Series

CONTAINS: 32 each - PL1046

16 piece kit also available: KT19-22002



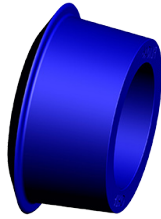
ATRO's two-piece bushings allow for easier installation by eliminating the interference between the spigot and ID. Simply slide one half of the two-piece bushing over opposite spigot ends and install the bare rod, install the second half of the bushings, caps and bolts. Reduces install time by 30% to 50%.

CHALMERS

PL1046

Torque Rod Bushing

Length: 2 1/8"
ID: 2 9/16"
Small OD: 3 9/16"
Large OD: 4 5/16"
Qty Per Vehicle: 32



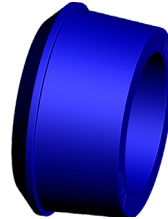
Cross References

Chalmers: 800010, 800010CS1
Model: 700 Trailer Suspension; 800/1000 Truck Suspension (Standard OD)

PL1047

Torque Rod Bushing

Length: 1 15/16"
ID: 2 7/16"
Small OD: 3 1/4"
Large OD: 3 5/8"
Qty Per Vehicle: 32



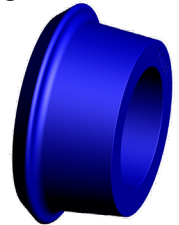
Cross References

Chalmers: 22128, 22128CS1
Model: 600/800/1000 Series Truck Suspension (Standard OD)

PL1049

Torque Rod Bushing, Oversized

Length: 2 1/8"
ID: 2 1/2"
Small OD: 3 5/8"
Large OD: 4 9/16"
Qty Per Vehicle: 32



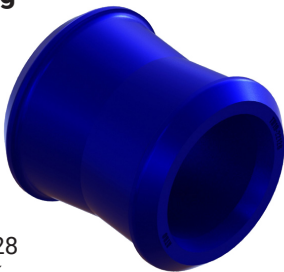
Cross References

Chalmers: 800009
Model: 800/1000 Truck Suspension (Oversized OD)

TH19-22128

Torque Rod Bushing

Length: 3 3/4"
ID: 2 3/8"
Small OD: 3 1/8"
Large OD: 3 11/16"
Qty Per Vehicle: 16



Cross References

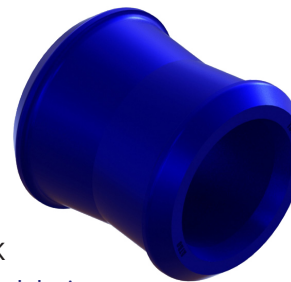
Chalmers: 22082, 22128
Model: 800 Series, 40K

NOTE: 1 Piece design
For 2-Piece design see PL1047

TH19-22129

Torque Rod Bushing, Oversized

Length: 3 3/4"
ID: 2 3/8"
Small OD: 3 3/16"
Large OD: 3 11/16"
Qty Per Vehicle: 16



Cross References

Chalmers: 22129
Model: 800 Series, 40K

NOTE: 1 Piece Oversized design

Scan QR code
for Chalmers
Suspension
Schematic



FREIGHTLINER

HL00-64001

Hood Latch

Length: 8 3/4"



Cross References

Freightliner: 680880160, 680-880-01-60
Model: FL106, FL112, FL50, FL60, FL70, FL80 1994-2005

HL00-64002

Hood Latch Catch

Length: 3.5"
Width: 1"
Depth: 2.1"



Cross References

Freightliner: 17-14781-000
Model: M2 Business Class

MM00-62000-HT

Engine Mount Kit, Front (High Temp)

ID: 3/4" Bolt
OD: 3"
Thickness: 13/16"
Contains: (2) Engine Mounts
(1) Spacer Sleeve
Qty Per Vehicle: 2



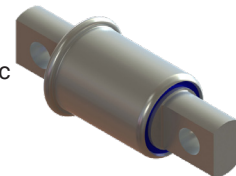
Cross References

Freightliner: SSB33-1000-2

PB46-26268

Pivot Bushing, Anti-Walk

OD: 2.5"
Bolt Hole: 3/4"
Bolt Holes: 5 21/32" c-c
Qty Per Vehicle: 4



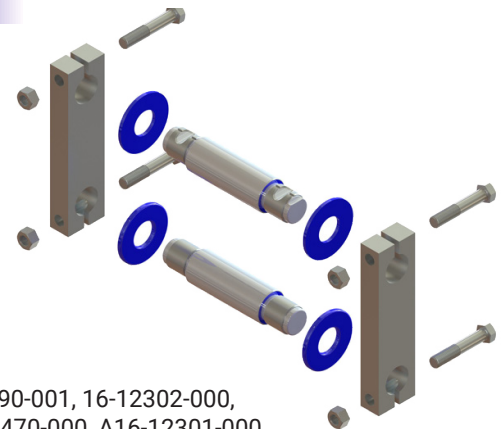
Cross References

Freightliner: 16-13962-000, 16-16412-000, 16-18035-000, 681-325-01-50, 681-325-02-50
Model: FAS II Airliner

SK46-10000

Spring Eye Shackle Kit

Bushing OD: 1 1/2"
Sidebar: 7.75"L X 2"W X 1"
Thickness: 5 5/16" C-C
Contains:
(2) SP46-11373 Bushings
(2) Sidebars
(4) Bolts
(4) Locknuts
Qty Per Vehicle: 2



Cross References

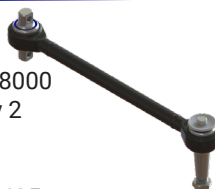
Freightliner: 16-11890-000, 16-11890-001, 16-12302-000, 16-12373-000, 16-12399-000, 16-13470-000, A16-12301-000
Model: 120 Series Conventional/COE; FLD112/FLC112 Conventional

NOTE: Cannot be used on vehicles requiring 1-5/8" hanger bushing

TR50-41635

Torque Rod

Length: 24 15/16" c-c
Bushings: TS38000/TT38000
Qty Per Vehicle: typically 2



Cross References

Freightliner: HDR 62350 635

HENDRICKSON

EB50-21013

Bar Pin Bushing Kit

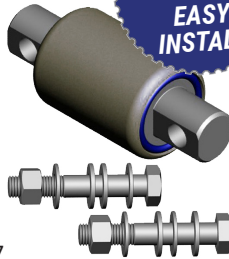
Length: 8 1/2" c-c

Large OD: 4 3/8"

Bolt Holes: 1 1/16"

Contains:

- (1) Bar Pin Bushing
 - (2) Bolts & Nuts
 - (4) Shims & Washers
- Qty Per Vehicle: 4



Rotating Bushing for EASY INSTALL

Cross References

Hendrickson: 34013-87
Model: Haulmaax, HN

KT50-25002

Suspension Kit

Contains:

- (8) Bolsters w/hardware
- (2) Progressive Load Springs w/hardware
- (2) Shims

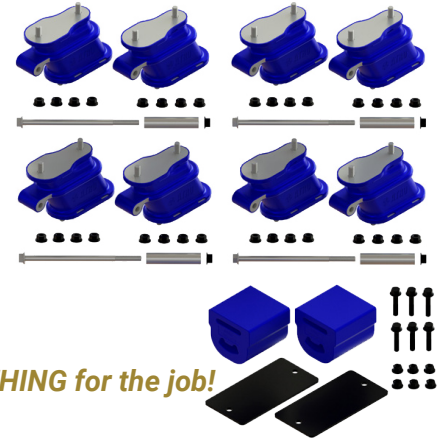
Qty Per Vehicle: 1

Cross References

Model: Haulmaax

NOTE: Ships in 2 boxes

One Part Number includes EVERYTHING for the job!



LP50-24902

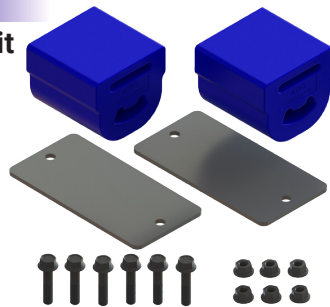
Progressive Load Spring Kit

Contains: (2) Load Springs

(2) Shims

(6) Bolts & Locknuts

Qty Per Vehicle: 1



Cross References

Hendrickson: 65902-004
Model: Haulmaax

Most important part on Haulmaax suspension!
It is NOT an overload spring or a bump stop.
It is designed to carry up to 40% of the load.

KT50-25005

Suspension Kit

Contains:

(4) Bolsters w/hardware

(2) Auxiliary Load Springs w/hardware

Qty Per Vehicle: 1

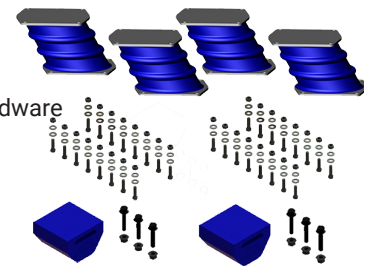
Cross References

Model: HN

NOTE: Ships in 2 boxes

One Part Number includes EVERYTHING for the job!

Kit for one side is also available: KT50-25004



TR50-41615

Torque Rod

Length: 24 1/4" c-c

Bushings: TS38000/TT38000

Qty Per Vehicle: typically 2



Cross References

Hendrickson: 62350-615, 8244-0099-610
Model: Haulmaax

TR50-41635

Torque Rod

Length: 24 15/16" c-c

Bushings: TS38000/TT38000

Qty Per Vehicle: typically 2



Cross References

Hendrickson: 62350-635

TR50-42565

Torque Rod

Length: 22 1/4" c-c

Bushings: TS38000/TS38000

Qty Per Vehicle: typically 2



Cross References

Hendrickson: 67428565,
62000-565, 62001-565, 62011-565
Model: Haulmaax

INTERNATIONAL

TR50-41635

Torque Rod

Length: 24 15/16" c-c

Bushings: TS38000/TT38000

Qty Per Vehicle: typically 2



Cross References

International: HD62350635,
HUD62350635, ZAK62350635,
ZJF62350635

TR55-418C1

Torque Rod

Length: 25 3/8" c-c

Bushings: TS38000/TS38000

Qty Per Vehicle: typically 2



Cross References

International: 3548381C1, 4C4Z4612AA, 501565C2
Model: Corporate Air

Scan QR code for info on
International
Corporate Air/IROS



KENWORTH

HL59-64107

Hood Latch
Length: 5 1/2"



Cross References

Kenworth: K147-107, K14C106
Model: T600A (1987-2005);
T800 (1985-1987); W900B

Looking for more Hood Latches?

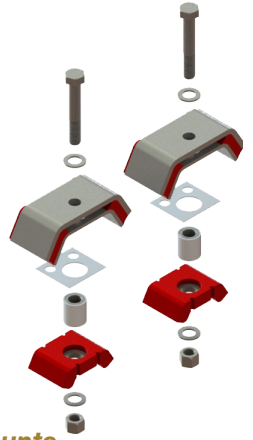
Scan the QR code to
view the *ATRO Hood
Latch Catalog*



KT59-62004-HT

Engine Mount Kit w/hardware, Rear (High Temp)

Contains: (2) Upper Mounts
(2) Lower Mounts
(2) Wear Plates
(2) Wear Sleeves
(2) Bolts 20mm x 120mm
(4) Flat Washers
(2) Locknuts



Cross References

Kenworth: K066-377 (no hardware), K066-421 (no hardware)
Model: T600, T800

**Both mounts must be ATRO hi-temp poly engine mounts.
Do not mix w/rubber or non-compatible poly mounts.**

SW59-29000-KIT

Sway Bar Complete Conversion Kit

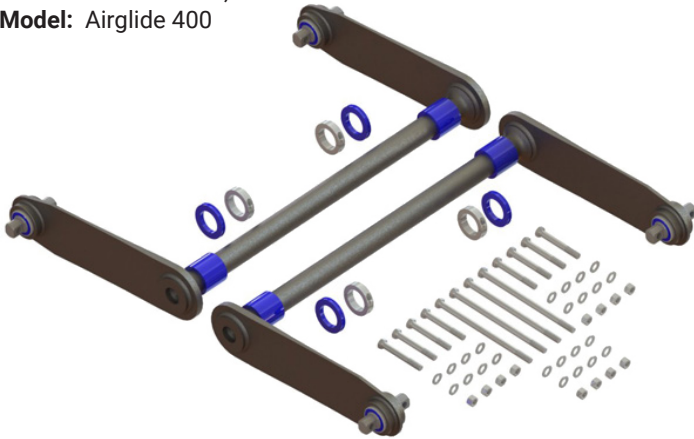
Axle Spacing: 52"
Large OD: 58mm (bar)
Length: 19 1/2" (arm)

Contains: (2) Sway Bar
(4) Sway Bar End Bushings
(4) SW59-29465 Wrap Bushings
(4) SW59-29461 Thrust Bushings
(4) SW59-29599 Shaft Collars
(1) HW59-29000 Hardware Kit

Qty Per Vehicle: 1

Cross References

Kenworth: C65-1000, C65-1013
Model: Airglide 400



Both sway bars must be replaced to be covered under warranty.

SW59-29001-KIT

Sway Bar Complete Conversion Kit

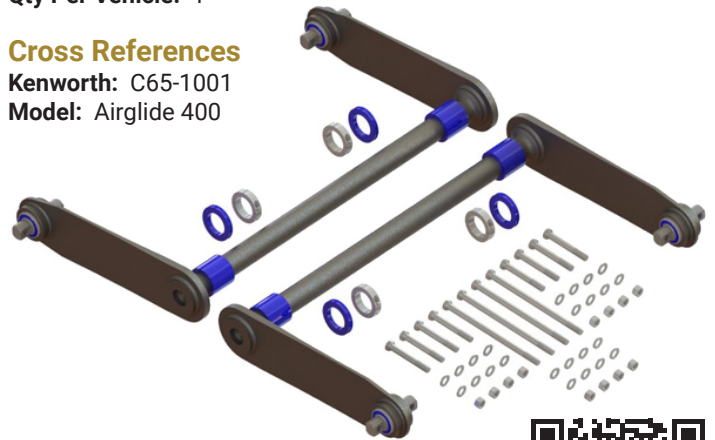
Axle Spacing: 54"
Large OD: 58mm (bar)
Length: 20 1/2" (arm)

Contains: (2) Sway Bar
(4) Sway Bar End Bushings
(4) SW59-29465 Wrap Bushings
(4) SW59-29461 Thrust Bushings
(4) SW59-29599 Shaft Collars
(1) HW59-29000 Hardware Kit

Qty Per Vehicle: 1

Cross References

Kenworth: C65-1001
Model: Airglide 400



Scan QR code for info on
Kenworth - Airglide 200/400



TR59-41008

Torque Rod

Length: 20 1/4" c-c
Bushings: TS59-22400/ TS59-22400
Qty Per Vehicle: typically 4



Cross References

Kenworth: C65-1008 (cast), C65-1009
Model: Airglide 230

NOTE: Heavy Duty; High articulation bushings; Bushings do NOT rotate

TR59-41474

Torque Rod

Length: 19 3/4" c-c
Bushings: TS59-22400/ TS59-22400
Qty Per Vehicle: typically 4



Cross References

Kenworth: K195-472 (no bushing), K195-474
Model: Airglide 200/400/460/690

NOTE: Heavy Duty; High articulation bushings; Bushings do NOT rotate

MACK

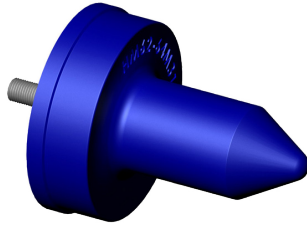
HM62-64M31

Pin Hood Guide

Length: 4 1/16"
Small OD: 1 1/2"
Large OD: 3 5/16"
Thread Size: 3/8"-24 UNF x 1 1/8"
Qty Per Vehicle: 2

Cross References

Mack: 25QM31



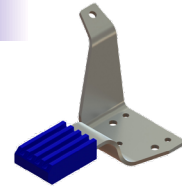
HM62-64362

Hood Rest Bracket, Right

Qty Per Vehicle: 1

Cross References

Mack: 20802362



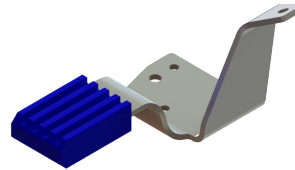
HM62-64371

Hood Rest Bracket, Left

Qty Per Vehicle: 1

Cross References

Mack: 20802371



KT62-62216-HT

Insulator Kit (High Temp)

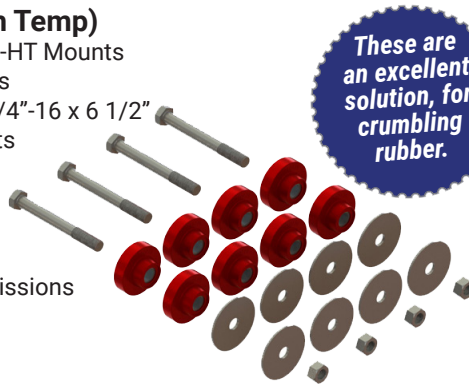
Contains: (8) PL1017-HT Mounts
(8) Washers
(4) Bolts, 3/4"-16 x 6 1/2"
(4) Locknuts

Qty Per Vehicle: 1

Cross References

Mack: 204SX216

Model: Mack Transmissions



KT62-62389-HT

Insulator Kit (High Temp)

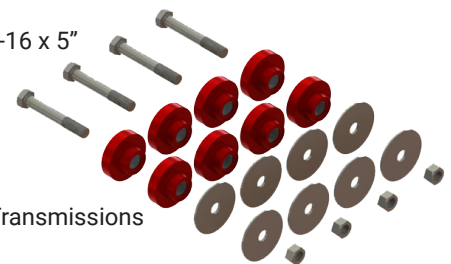
Contains: (8) PL1017-HT Mounts
(8) Washers
(4) Bolts, 3/4"-16 x 5"
(4) Locknuts

Qty Per Vehicle: 1

Cross References

Mack: 204SX389

Model: Fuller & Allison Transmissions



ATRO developed polymers that withstand extreme heat in the 300°F range and have replaced the rubber or polyurethane materials that can fail at 200°F. ATRO's material maintains its physical properties throughout the load, heat and stress.

Scan the code to view the online ATRO High Temp Parts Catalog



MM62-63582-HT

Engine/Transmission Mount Kit (High Temp)

ID: 3/4"
Large OD: 3 3/4"
Small OD: 2 1/2"
Qty Per Vehicle: 2

Cross References

Mack: 20QL336, 25153582



This part is a **PROBLEM SOLVER.**
Scan for more info



SK50650-HW

Insulator Kit w/Hardware

Contains: (4) MA32000 Load Pads, Upper
(4) MA37200 Load Pads, Lower
(4) Bolts, 7/8"-9 UNC 6"
(12) Bolts, 7/8"-14 UNF 7 1/2"
(12) Locknuts
(16) Flat Washers

Qty Per Vehicle: 1

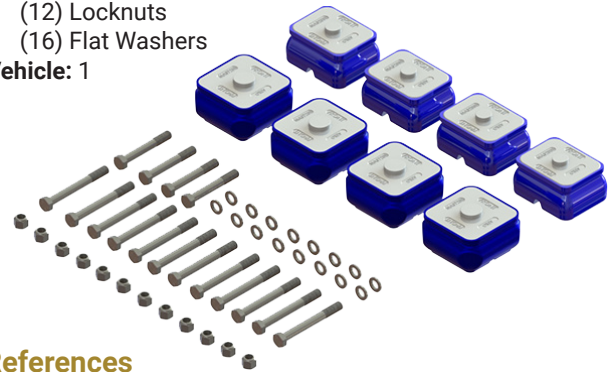
Cross References

Mack: Upper Pads - 110QK32BP1, 25115289;

Lower Pads - 10QK372, 10QK389, 25124724

Model: Camelback SS 55-65 Series; SW/SWW

NOTE: Complete Camelback Kit; Ships in 2 boxes



PL1017-HT

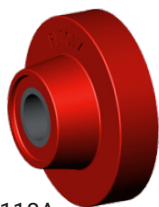
Transmission Mount (High Temp)

Height: 1 1/2"
ID: 3/4"
Small OD: 1 11/16"
Large OD: 3 3/16"
Qty Per Vehicle: 8

Cross References

Mack: 20QL1175, 25167342, 20QL1118A

NOTE: See KT62-62216-HT & KT62-62389-HT for complete kits



SK62-50340

Insulator Kit w/Hardware & Spacer Blocks

Contains: (4) MA36500 Load Pads, Upper
 (4) MA36000 Load Pads, Lower
 (8) Insulator Spacer Block
 (4) Bolts, 7/8"-9 UNC 4"
 (12) Bolts, 7/8"-14 UNF 5"
 (12) Locknuts
 (16) Flat Washers

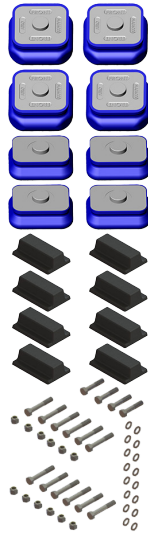
Qty Per Vehicle: 1

Cross References

Mack: Upper Pads - 10QK343P7, 10QK365A, 10QK367, 25121508;
 Lower Pads - 10QK36B, 10QK36C, 10QK388, 21036254, 25125064

Model: Camelback SS34/44/50 Series;
 SW / ST34 Series

NOTE: Complete Camelback Kit; Ships in 2 boxes



SK62-50380

Insulator Kit w/Hardware & Spacer Blocks

Contains: (4) MA37000 Load Pads, Upper
 (4) MA36000 Load Pads, Lower
 (8) Insulator Spacer Block
 (4) Bolts, 7/8"-9 UNC 4"
 (12) Bolts, 7/8"-14 UNF 5"
 (12) Locknuts
 (16) Flat Washers

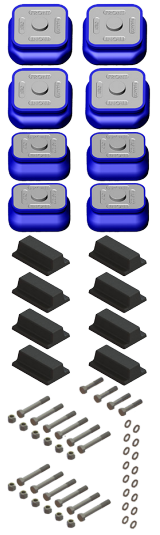
Qty Per Vehicle: 1

Cross References

Mack: Upper Pads - 10QK370, 25115012;
 Lower Pads - 10QK36B, 10QK36C, 10QK388, 21036254, 25125064, 10QK388, 21036254, 25125064

Model: Camelback SWS573

NOTE: Complete Camelback Kit; Ships in 2 boxes



ATRO's Insulator Load Pads feature shock absorbing, low rebound polyurethane material which causes the shock to remain within the pad and NOT transfer throughout the suspension system. This results in a smoother ride, longer life of pads, extended life of attached parts, less cab damage and reduction in T-Leaf failure.



Scan QR code for info on Mack Camelback

TR50-41635

Torque Rod

Length: 24 15/16" c-c
Bushings: TS38000/TT38000
Qty Per Vehicle: typically 2

Cross References

Mack: 4000-62350635



TR62-41180

Torque Rod

Length: 18" c-c
Bushings: TS38000/TM38000
Qty Per Vehicle: typically 2

Cross References

Mack: 1RY48P23, 25153567, 25162529, 17QF251P11, 17QF463P180, 17QF464P180
Model: Camelback



TR62-41220

Torque Rod

Length: 22" c-c
Bushings: TS38000/TS38000
Qty Per Vehicle: typically 2

Cross References

Mack: 25174706, 17QF511, 17QF460P220
Model: Camelback



TR62-41243

Torque Rod

Length: 24 1/4" c-c
Bushings: TS38000/TS38000
Qty Per Vehicle: typically 2

Cross References

Mack: 25170833, 17QF352M2, 17QF473M4, 17QF261P23, 17QF460P243



TR62-413M2

Torque Rod

Length: 21" c-c
Bushings: TS38000/TS38000
Qty Per Vehicle: typically 2

Cross References

Mack: 25170832, 17QF460P210
Model: Camelback



TR62-413M3

Torque Rod

Length: 20" c-c
Bushings: TS38000/TS38000
Qty Per Vehicle: typically 2

Cross References

Mack: 25170831 25014582, 17QF358, 17QF473M, 17QF460P200
Model: Camelback

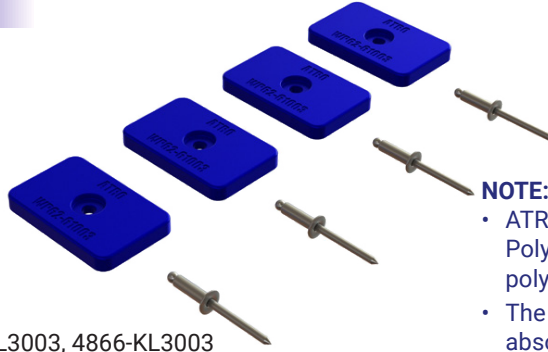


MACK

WP62-61003

Vibration Kit

Pad Height: 1/4"
Pad Width: 1 3/8"
Pad Length: 2 1/4"
Rivet: 3/16" Diameter x 1/2"
Qty Per Vehicle: 2
Contains: (4) Pads
(4) Blind Rivets



NOTE:

- ATRO's Vibration Kit is made with our Genuine Polyurethane which lasts longer than rubber or other polyurethanes
- The polyurethane formulation used for this part absorbs shock and dampens vibration
- ATRO's price on this kit is very competitive versus OE

Cross References

Mack: 44-74, 9343-6223, 4866KL3003, 4866-KL3003
Model: 8182 Cab Tilt

NEWAY

TR57-44645

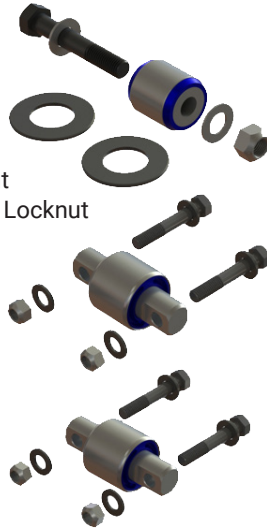
V-Rod Rebush Kit

Contains: (2) TS59-22400 Bushings
(1) TH57-22264 Bushing
(2) Spacer Shims
(1) 1-8 UNC x 6" Bolt & Locknut
(4) 5/8-11 UNC x 3 3/4" Bolt & Locknut
(2) 1" Washers
(8) 5/8" Washers

Qty Per Axle: 1

Cross References

Neway: 48100511, SRK-645
Model: ADZ Series



TR57-44992

V-Rod Assembly

Length: 20 1/2" c-c (H/S)
20 1/4" c-c (S/S)

Bushings:

TS59-22400/TS59-22400/TH57-22264

Qty Per Axle: 1

Cross References

Neway: 90045702, 90548900, 90549992
Model: ADZ-123; ADZ-126 Series



Scan QR code for more information on the Neway ADZ Suspension



PETERBILT

CM75-61055

Cab Mount

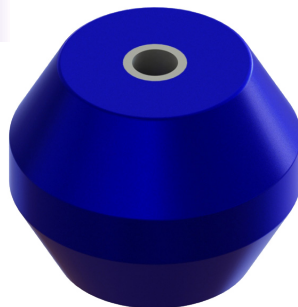
Height: 2 3/4"
ID: 1/2"
OD: 3 3/8"
Qty Per Vehicle: 2

Cross References

Peterbilt: 170-55
Model: 320

NOTE: High Wear Item on newer Peterbilt trucks

- ATRO's proprietary polyurethanes lasts 3 to 5 times longer than rubber.
- ATRO's polyurethane are impervious to Oil, Grease, Cleaning Solvents, Diesel Fuel, Hydraulic Fluid and Road Salt & Brine.
- This product uses an ATRO polyurethane with shock absorption qualities, making for smoother ride and longer life of components.



EM75-69096-HT

Exhaust/Radiator Mount; Air to Air Bushing (High Temp)

Height: 3/8" (flange)
Large OD: 1 1/16"
OD: 3/4" (nipple)

Cross References

Peterbilt: 13-03096
Model: 357, 375-379, 385 Pre 1995 Standard

NOTE: Accepts 3/8" diameter fasteners (not included)



Scan the code to view the online ATRO High Temp Parts Catalog



PETERBILT

HL00-64003

Hood Latch Kit

Length: 8 3/4" Latch

Qty Per Vehicle: 1

Contains:

- (1) HL00-64001 Hood Latch
- (1) HL00-64002 Hood Latch Catch
- (1) Bracket
- (1) Bolt
- (1) Nut



Cross References

Peterbilt: 23-13857

Model: T600A, T800, W900 (1987-96 & 2003-10) Exc. Ball Style



The physical properties of ATRO's Polyurethane are so superior that rubber simply can't compete. This is true for many truck components and applies to Hood Latches, in particular because:

- Hood Latches are exposed to the elements – Polyurethane is not affected by chemical attack
- The quality of rubber fluctuates – ATRO polyurethane is consistent.
- Repeated use causes rubber hood latch straps to break.
- ATRO Polyurethane has 3 X the tear strength of rubber.

HM75-64593

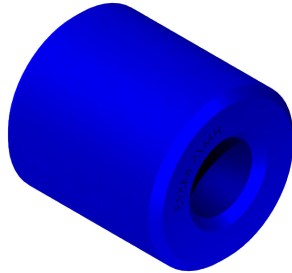
Hood Roller

Length: 1 5/8"

ID: 5/8"

OD: 1 1/2"

Qty Per Vehicle: 2



Cross References

Peterbilt: 13-03593

Model: 357, 357-379

HM75-65711

Hood Bumper

Inside Height: 1 9/16"

Outside Height: 2"

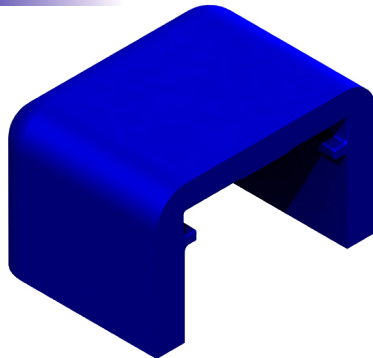
Inside Width: 2 1/4"

Outside Width: 3 1/8"

Inside Length: 2"

Outside Length: 2 3/8"

Qty Per Vehicle: 2



Cross References

Peterbilt: 13-04711

Model: 385

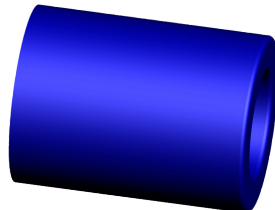
PL1062

Hood Roller

Length: 1 1/2"

ID: 1 1/16"

OD: 1 1/8"



Cross References

Peterbilt: 13-04391

EM75-69656-HT

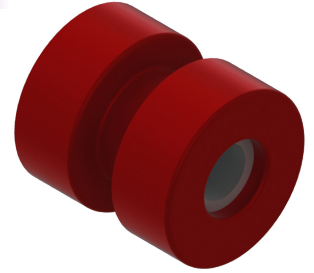
Exhaust Bushing (High Temp)

ID: 3/8"

Small OD: 3/4"

Large OD: 1 1/4"

Sleeve: 1 1/4"



Cross References

Peterbilt: 14-14656

Model: 357, 375-379, 385

HM75-64726

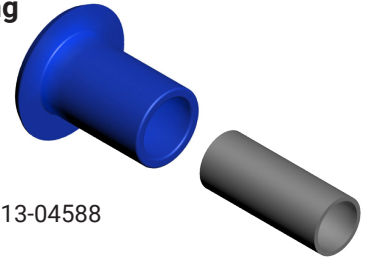
Hood Mount Pivot Bushing

Small OD: 1"

Large OD: 1 11/16"

Sleeve ID: 5/8"

Sleeve Length: 1 7/8"



Cross References

Peterbilt: 13-04726, 13-04727, 13-04588

Model: 357, 367, 377-379

KT75-61257

Cab/Sleeper Mount Kit

Bushing Height: 1 1/8"

Bushing ID: 21/32"

Bushing Large OD: 3"

Nipple OD: 1 13/16"

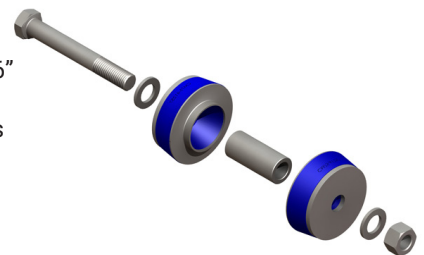
Contains: (2) CM75-61257

(2) Flat Washers

(1) Nut

(1) Inner Sleeve

(1) Bolt



Cross References

Peterbilt: 20-08257, 20-08867

Model: 357, 365, 378, 379, 385, 389

Scan the code
to view more ATRO
Underhood/Cab products



PETERBILT

MM00-62000-HT

Engine Mount Kit, Front (High Temp)

ID: 3/4" Bolt

OD: 3"

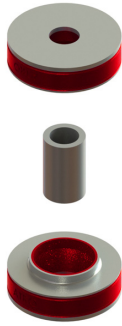
Thickness: 13/16"

Qty Per Vehicle: 2

Contains: (2) Engine Mounts
(1) Spacer Sleeve

Cross References

Peterbilt: SSB33-1000-2



MM75-62001-HT

Engine Mount Kit, Front (High Temp)

Qty Per Vehicle: 1

Contains: (4) MM75-62372-HT Engine Mount

(4) Nuts

(4) Bolts (5/8-11X4.25" GR8)

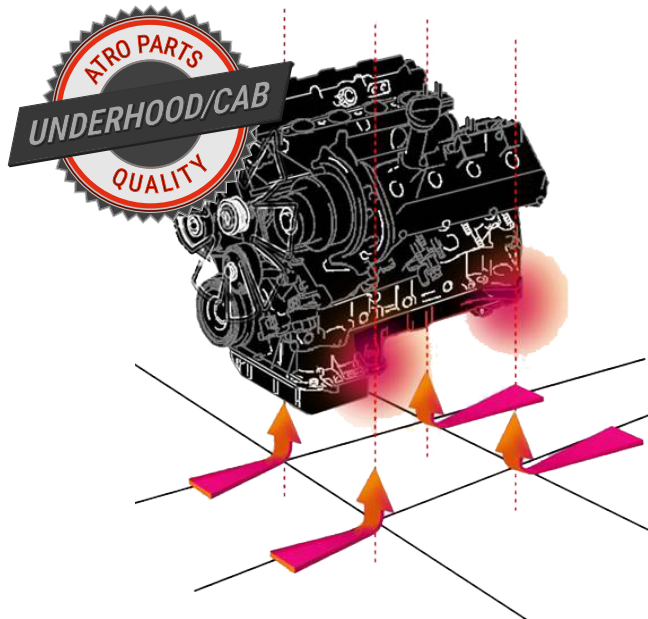
(4) Snubber Washers

(8) Washers

Cross References

Peterbilt: CB2203-72; MR1001 Mount Bushing

Model: 379 w/CAT C12, C13; 320 w/Cummins



ATRO High Temperature engine mounts perform in the extreme conditions of EGR/SCR engine systems. The ATRO HT formula is the only high temperature resistant polyurethane in the marketplace and greatly exceeds the performance of rubber. These high temperature motor mounts resist scorching heat, retain their form, consistency and elasticity while reducing vibration in the cab and helping prevent sudden load shifts.

Scan the code to view the online ATRO High Temp Parts Catalog



MM75-62597-HT

Engine Mount Kit, Front (High Temp)

Length: 1 13/16" Sleeve

ID: 1/2"

OD: 2 5/8"

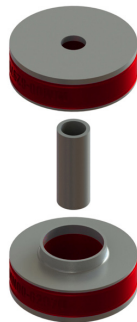
Thickness: 13/16"

Contains: (2) Mounts Bushings
(1) Spacer Sleeve

Cross References

Peterbilt: 05-17597

Model: 320



TR75-41059

Torque Rod

Length: 22 7/8" c-c

Bushings: TS38000/TS38000

Qty Per Vehicle: typically 2

Cross References

Peterbilt: 03-04059, 03-02439, C65-6013, SS-219-117, C656025000000581, C65-6025-000000581



TR75-41108

Torque Rod

Length: 25 9/16" c-c

Bushings: TS38000/TS38000

Qty Per Vehicle: typically 2

Cross References

Peterbilt: 03-05108, 943711



TR75-41327

Torque Rod

Length: 17 5/16" c-c

Bushings: TS38000/TS38750

Qty Per Vehicle: typically 2

Cross References

Peterbilt: 03-04327, 924175, C65-6012-000010440, C65-6016-000010440, SS326-11



VOLVO

HL96-64018

Hood Latch Kit

Contains:

- (1) HL00-64002 Hood Latch Catch
- (4) HL96-64000 Hood Latch

Cross References

Volvo: 8174018, 1118205

Model: ISL Engines



LP96-24657

Load Spring

Height: 5 7/8"

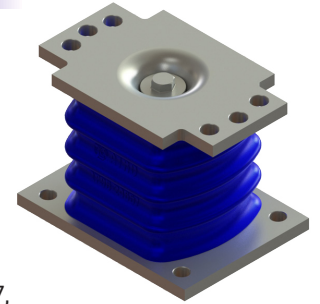
Bolt Size Top: 9/16"

Bolt Size Bottom: 1/2"

Top Bolt Pattern: 2 bolt= 7 1/16"

Base Bolt Pattern:

4 bolt= 6 9/32" x 4 9/16"



Cross References

Volvo: 1089501, 1577873, 1609657,

1629553, 20390836, 20536818,

3090971, 8151413

Model: T-Ride

MM96-62657-HT

Engine Mount (High Temp)

Length: 3"

Inner Diameter: 1 1/2"

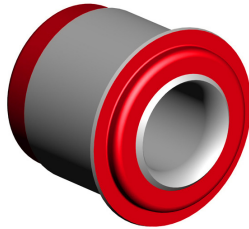
Small Outside Diameter: 3"

Qty Per Vehicle: 2

Cross References

Volvo: 3081657

Model: ISL Engines



Scan QR code for
more info on
Volvo T-Ride



TR96-44004

V-Rod Assembly

Length: 26 1/16" c-c

Bushings:

TS96-22600/TS96-22600/TH96-22200

Qty Per Axle: 1

Cross References

Volvo: 20367004, 20507262,

20741695, 20741703, 22318833

Model: T-Ride



TR96-44829

V-Rod Assembly

Length: 26 3/4" c-c

Bushings:

TS96-22286/TS96-22286/TH96-22200

Qty Per Axle: 1

Cross References

Volvo: 3172829, 8073569

Model: T-Ride



TR96-45568

Torque Rod, Adjustable (Offset)

Length: 23 5/8" c-c

Adjustable 22 7/8" - 24 3/8" c-c

Bushings: TS96-22700/TS96-22700

Qty Per Vehicle: 2

Cross References

Volvo: 20509568

Model: T-Ride, M-Ride



TR96-49046

Torque Rod (Offset)

Length: 22 5/8" c-c

Bushings: TS96-22700/TS96-22700

Qty Per Vehicle: 2

Cross References

Volvo: 20443046

Model: T-Ride, M-Ride



Looking for more parts?
Visit ATRObushing.com

ATRO

ENGINEERED SYSTEMS

With ATRO behind you, drive forward.



Impervious to:

- Oil/Grease
- Brine
- Cleaning Solutions
- Hydraulic Fluids
- Diesel Fuel

Rubber Deteriorates



- Engineered to Function
- Providing Peak Performance
- Improving Ride Quality
- Absorbs Shock or Transfers Energy
- Exceeds OE Specs
- Longer Lasting Parts



ATRO Polyurethane vs Rubber

- 2-5 Times Stronger
- Rebound & Compression
- Tensile & Tear Strength
- Elongation Properties
- Ranging Durometer

Follow ATRO on



800.325.6114 • www.ATRObushing.com

6 Bolte Lane • St. Clair, Missouri 63077 • U.S.A.

ATRO, LLC. is not liable for any errors herein. All manufacturers' names and part numbers are used without permission; no endorsement, affiliation, or recommendation is implied. They are included for reference purposes only.