

VOCATIONAL TRUCKS PARTS GUIDE

CELEBRATING 30 YEARS
ATRO
POLYURETHANE • SOLUTIONS

POLYURETHANE PARTS | SOLUTIONS FOR HEAVY TRUCKS



ATRO PARTS
(800) 325-6114

ENGINEERED | DURABLE | RELIABLE

ATROBUSHING.COM
MANUFACTURED IN ST. CLAIR, MISSOURI | U.S.A.

CONTENTS

OEMs

ADVANCE MIXER1	FULLER TRANSMISSION9	PETERBILT25
AUTOCAR1	HEIL9	SPICER27
CHALMERS2	HENDRICKSON10	STERLING TRUCK28
CON-TECH4	INTERNATIONAL14	TEREX MIXER28
CUROTTO CAN4	KENWORTH18	UNISORB28
FORD5	MACK20	VOLVO29
FREIGHTLINER5	MCNEILUS24	WESTERN STAR31

POLYURETHANE PARTS | SOLUTIONS FOR HEAVY TRUCKS

BETTER THAN RUBBER PARTS



CHEMICALLY RESISTANT

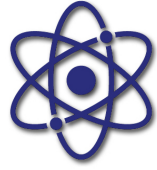
- Impervious to:
- Oil / Grease
 - Brine
 - Cleaning Solvents
 - Hydraulic Fluids
 - Diesel Fuel

Rubber Deteriorates



STRONGER MATERIAL

- 2-5 Times Stronger
- Rebound & Compression
- Tensile & Tear Strength
- Elongation Properties
- Ranging Durometer



11 PROPRIETARY ENGINEERED FORMULAS

- Engineered to Function
- Providing Peak Performance
- Improving Ride Quality
- Absorbs Shock or Transfers Energy
- Exceeds OE Specs
- Longer Lasting Parts

ATROBUSHING.COM

1.800.325.6114

BUMPER TO BUMPER PARTS | SUPERIOR CUSTOMER SERVICE



SERVICING OVER 40+ SUSPENSIONS | TORQUE RODS | CAB | UNDERHOOD | TRAILER

ATRO Engineered Systems, Inc. is not liable for any errors herein. All manufacturers' names & part numbers are trademarked by the respective manufacturer. These names & part numbers are being used without permission. No endorsement, affiliation or recommendation is implied. They are included for reference purposes only.
Some products shown here are covered by Canadian Patent 1,327,979; Australian Patent 630,358.

ADVANCE MIXER

PL1033 Water Tank/Radiator/Cub Mount

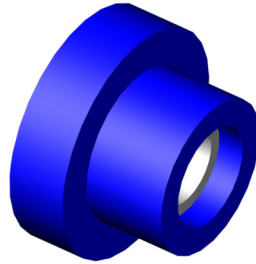
Replaces: Advance Mixer 7317

ID: 11/16"

Small OD: 1 5/16"

Large OD: 2"

Length: 1 1/4"



ATRO products are covered by a 3 year warranty. See atrobushing.com for full details.

Exceptions:

- Small eye torque rods (2" ID) - 2 year
- Hendrickson pads (LP50 Series) - 1 year
- Equalizer beams - 1 year
- Tools - no warranty

AUTOCAR

CM13-61026 Cab Isolator

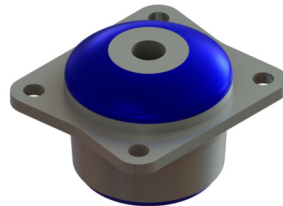
Replaces: Autocar

A6621026-001

ID: 5/8"

OD: 2 15/16"

Length: 2 5/8"



CM13-61199 Cab Pivot Bushing

Replaces: Autocar

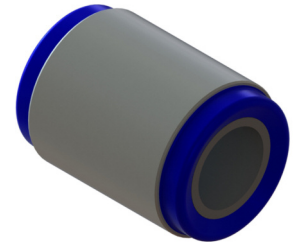
A6600010-001

ID: 1 1/8"

OD: 2 1/8"

Length: 2 29/32"

Outer Sleeve: 2 1/4"



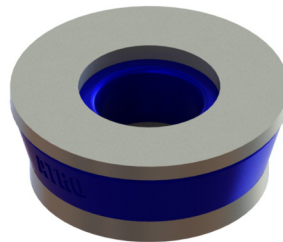
MM96-62002 Motor Mount, Front (Snubber)

Replaces: Autocar 3081659,
12005-0002, 12005-3208

ID: 5/8"

OD: 2 3/4"

Thickness: 1"



MM96-62657 Motor Mount

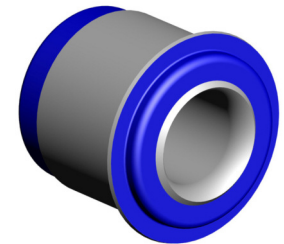
Replaces: Autocar 8077380

ISL Engines

ID: 1 1/2"

OD: 3"

Length: 3"



PL1176 Cab Stop

Replaces: Autocar

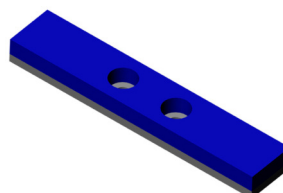
A5080048-001

Length: 8"

Height: 3/4"

Width: 1 1/2"

Bolt Holes: 1 3/4" c-c



TM99-63506 Transmission Mount

Replaces: Autocar PA014-052013

Length: 4 3/4"

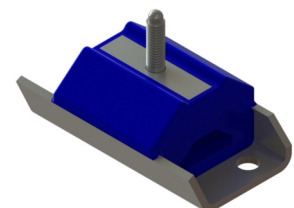
Height: 1 7/8"

Width: 2 7/8"

Bolt Hole: 15/32"

Bolt Holes: 3 3/4" c-c

Stud: M10x1.5



AUTOCAR - Continued

TR13-41022 Torque Rod

Replaces: Autocar 35801-0033,
358010-560
Length: 22" c-c

Contains: TS38000/TT38000



TR13-41635 Torque Rod

Replaces: Autocar
A3580010-635, S3580001-635,
S3580003-635
Length: 25" c-c

Contains: TS59-24000/TT38000

Clock TS59-24000 at 90°
TS59-22400 is High Articulation
Bushing



TR59-41150 Torque Rod

Replaces: Autocar
A3580010-635, S3580001-635
Length: 25" c-c

Contains: TS38000/TT38000



HW19-29200 Bolt Kit Type "0" Joint

Replaces: Chalmers K880230
Contains:
(1) Bolt
(1) Flanged Locknut
(1) Flat Washer
OD: 5/8" Bolt
Length: 3 1/2" Bolt



HW19-29201 Bolt Kit Type "1" Joint

Replaces: Chalmers
HDW379 locknut
HDW381 bolt, K880640
Contains:
(1) Flanged Bolt
(1) Flanged Locknut
OD: 5/8" Bolt
Length: 5" Bol



HW19-29202 Bolt Kit Type "2" Joint

Replaces: Chalmers
HDW379 locknut
HDW382 bolt, K880231
Contains:
(1) Flanged Bolt
(1) Flanged Locknut
OD: 5/8" Bolt
Length: 5 1/2" Bolt



LP19-24002 Load Spring

Replaces: Chalmers 15002
500/600/800/1100 Truck;
300/700 Trailer 40K to 58K
ID: 2"
OD: 9 1/2"
Height: 8"



LP19-24015 Load Spring

Replaces: Chalmers 15015
1030 Series Truck;
500 Series Trailer
ID: 2"
OD: 8 1/2"
Height: 8"



CHALMERS - Continued

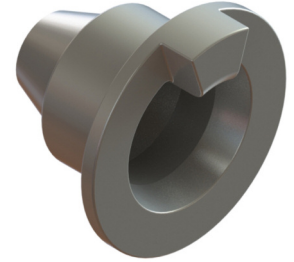
LP19-24026 Load Spring

Replaces: Chalmers 15026
800 Series 100,000 lbs.
ID: 2"
OD: 10 3/4"
Height: 8"



MS19-29002 Spigot Cap, Type 0

Replaces: Chalmers 260002
600-800 Series
ID: 5/8" Bolt
OD: 3 3/4"



MS19-29028 Restrictor Can, Standard

Replaces: Chalmers 373020,
373028
600-800 Series
OD: 12 5/8"
Height: 4 7/16"



MS19-29029 Restrictor Can, High Stability

Replaces: Chalmers 373021,
373029
600-800 Series
OD: 11 5/8"
Height: 5 3/16"



MS19-29055 Spigot Cap, Type 2

Replaces: Chalmers 800055
600-800 Series
ID: 5/8" Bolt
OD: 4 1/2"



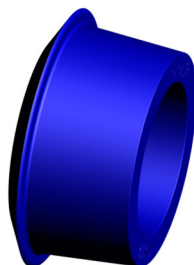
MS19-29201 Spigot Cap, Type 1

Replaces: Chalmers 800201
600-800 Series
ID: 5/8" Bolt
OD: 4"



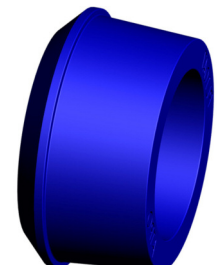
PL1046 Torque Rod Bushing

Replaces: Chalmers 800010
700 Trailer Suspension; 800/1000
Truck Suspension (standard OD)
ID: 2 9/16"
Small OD: 3 9/16"
Large OD: 4 5/16"
Length: 2 1/8"
2-Piece bushing design to ease
install.
For 1-Piece see TH19-22010



PL1047 Torque Rod Bushing

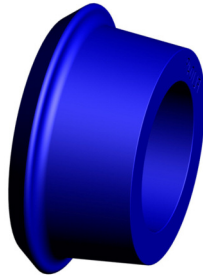
Replaces: Chalmers 22128
300/500/700 Series Trailer
Suspension; 600/800/1000 Series
Truck Suspension (standard OD)
ID: 2 7/16"
Small OD: 3 1/4"
Large OD: 3 5/8"
Length: 1 15/16"
2-Piece bushing design to ease
installation
For 1-Piece see TH19-22128



CHALMERS - Continued

PL1049 Torque Rod Bushing

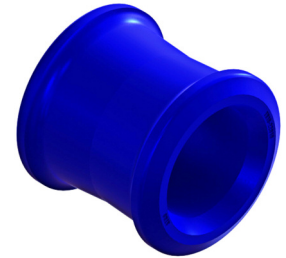
Replaces: Chalmers 800009
700 Trailer Suspension; 800/1000
Truck Suspension (oversized OD)
ID: 2 1/2"
Small OD: 3 5/8"
Large OD: 4 9/16"
Length: 2 1/8"



Not identical to OE bushing in
appearance
2-Piece bushing design to ease installation

TH19-22010 Torque Rod Bushing

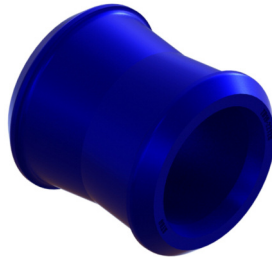
Replaces: Chalmers 800010
700 Truck Series; 800 Trailer
Series; 1023/1030 Single Axle
ID: 2 9/16"
Small OD: 3 9/16"
Large OD: 4 1/4"
Length: 4 1/8"



1-Piece Design
For 2-Piece Design see PL1046

TH19-22128 Torque Rod Bushing

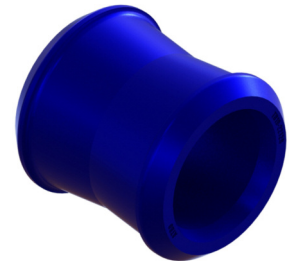
Replaces: Chalmers 22128
300/500/700 Trailer:
600/800/1000 Truck
ID: 2 3/8"
Small OD: 3 1/8"
Large OD: 3 11/16"
Length: 3 3/4"



1-Piece Design
For 2-Piece Design see PL1047

TH19-22129 Torque Rod Bushing-Oversized

Replaces: Chalmers 22129
300/500/700 Trailer:
600/800/1000 Truck
ID: 2 3/8"
Small OD: 3 3/16"
Large OD: 3 11/16"
Length: 3 3/4"

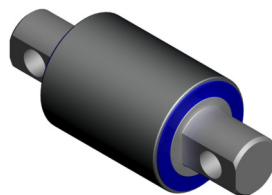


1-Piece Design, OVERSIZED
For 2-Piece Design see PL1047

CON-TECH

EB38651 Cylinder Pivot Bushing

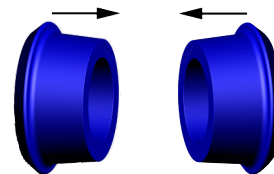
Replaces: Con-Tech 750051
BridgeKing
OD: 4 3/8"
Length: 8 1/2"
Bolt Hole: 1 1/16"



Install Tool: PT40000

CHALMERS 2-PIECE BUSHINGS

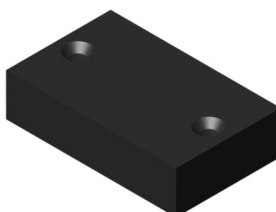
REDUCES 50% OF INSTALLATION TIME
PARTS IMPERVIOUS TO CHEMICAL ATTACK
RUBBER PARTS DETERIORATE



CUROTTO CAN

MS99-69779 Bumper

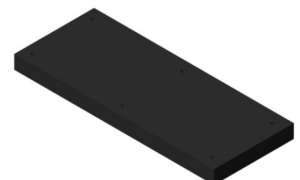
Replaces: Curotto Can 1238779,
AC02-036
Curotto Can Waste Hauler Arm
Length: 3 1/4"
Width: 2"
Thickness: 13/16"



No Warranty

MS99-69780 Bumper

Replaces: Curotto Can 1238780,
AC02-034
Curotto Can Waste Hauler Arm
Length: 10"
Width: 4"
Thickness: 11/16"

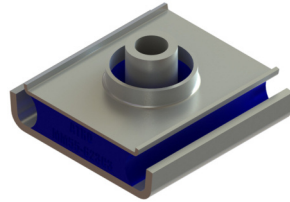


No Warranty

FORD

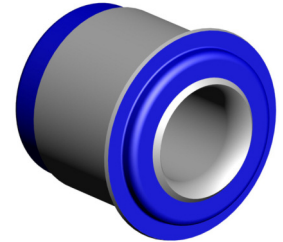
MM55-623C3 Motor Mount, Lower (Front)

Replaces: Ford 4C40-6038-AA,
4C4Z6038A
ID: 5/8"
Length: 4"
Width: 4 1/16"



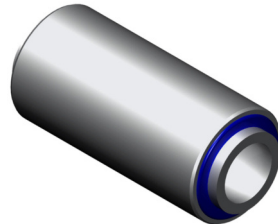
PL1048 Motor Mount

Replaces: Ford DOHZ6068B
ID: 1 9/16"
Small OD: 3"
Large OD: 3 7/16"
Length: 3 1/8"



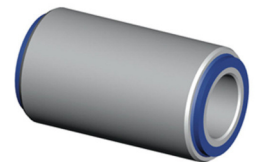
SP99-11001 Spring Eye Bushing

Replaces: Ford C4T25348A,
C4T25348A
ID: 5/8"
OD: 1 1/4"
Length: 2 3/4"



UB75000 Leaf Spring Bushing

Replaces: Ford E0HZ5781A
B; CF; CL; F; L; LN; Rear Single Axle
ID: 1"
OD: 1 13/16"
Length: 3"



Front of front
Rear of front

FREIGHTLINER

HL00-64001 Hood Latch

Replaces: Freightliner
680-880-01-60
M2 Business Class



HL00-64002 Hood Latch

Replaces: Freightliner
17-14781-000
M2 Business Class



Included in kits: HL46-64530,
HL46-64531, HL96-64018

HL46-64434 Hood Latch

Replaces: Freightliner
17-12434-000
FLD/FLD Classic

Included in kits: HL46-64480,
HL46-64650, HL46-64651



HL46-64435 Hood Latch

Replaces: Freightliner
17-12435-000
FLD 120, Offset Axle

Included in kits: HL46-64480,
HL46-64530, HL46-64531



FREIGHTLINER - Continued

HL46-64480 Hood Latch Kit

Replaces: Freightliner
17-12348-000
FLD 120, Classic (1997-2009)
Contains:
(1) HL46-64434
(1) HL46-64435



HL46-64530 Hood Latch Kit, Left Hand

Replaces: Freightliner
A17-15553-000
Columbia (1995-2008)
Contains:
(1) HL00-64002
(1) HL46-64435



HL46-64531 Hood Latch Kit, Right Hand

Replaces: Freightliner
A17-15553-001
Columbia (1995-2008)
Contains:
(1) HL00-64002
(1) HL46-64435



HL46-64650 Hood Latch Kit, Left Hand

Replaces: Freightliner
17-12434-000, 17-12435-000
FLD 120, Offset Axle
Contains:
(1) HL46-64434
(1) HL46-64435



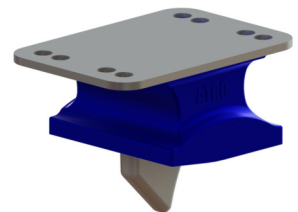
HL46-64651 Hood Latch Kit, Right Hand

Replaces: Freightliner
17-12434-001, 17-12435-001
FLD 120, Offset Axle
Contains:
(1) HL46-64434
(1) HL46-64435



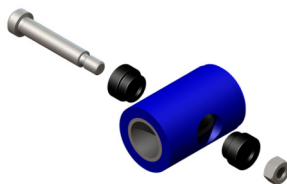
LP46-19773 Spring Pad

Replaces: Freightliner
A1615303000, A1615773000
M2 Medium Duty
Length: 7 9/16"
Height: 3 1/8"
Width: 5 1/4"



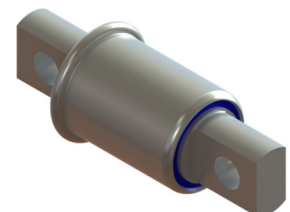
MS99-63399 Shifter Isolator Bushing Kit

Replaces: Freightliner
FUL K-3399
Contains:
(1) Shifter Isolator Bushing
(2) Step Bushings
(1) Shoulder Bolt
(1) Lock Nut
ID: .84"
OD: 1 1/2"
Length: 2.3"



PB46-26268 Pivot Bushing (Anti-Walk)

Replaces: Freightliner
16-16412-000, 16-18035-000,
Not direct crosses: 16-13962-000,
16-13962-000, 681-325-01-50,
681-325-02-50
FAS II Airliner
OD: 2 1/2"
Bolt Hole: 3/4"
Bolt Holes: 5 21/32" c-c



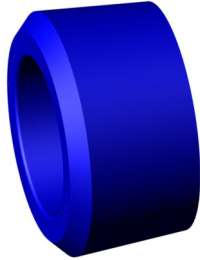
Anti-Walk High Confinement
Install Tool: PT50000

Install Tool: PT99-63399

FREIGHTLINER - Continued

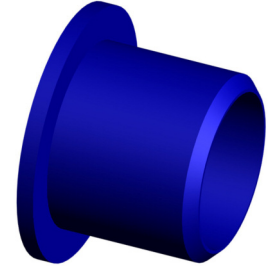
PL1053 Torque Rod Bushing

Replaces: Freightliner
16-11351-000
Four Spring Suspension;
Late 4" Spring
ID: 1 3/8"
Small OD: 2"
Large OD: 2 1/8"
Length: 1 1/8"



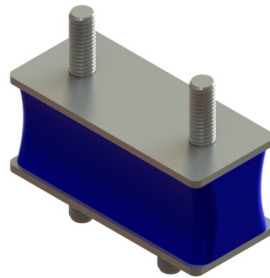
PL1054 Equalizer Bushing

Replaces: Freightliner
16-13568-000, A16-10549
FH36-40 (3" Spring); FH34
ID: 2 5/16"
Small OD: 2 3/4"
Large OD: 3 3/4"
Length: 2 1/2"



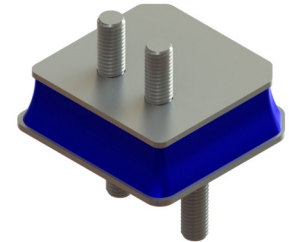
RM46-63359 Radiator Isolator

Replaces: Freightliner
A6805040182, LOR SM1035 9,
MBT A6805040382
Medium Duty, FC70; FC80; FLB;
M2 106
Length: 3 3/4"
Width: 1 5/8"
Thickness: 1 5/8"
Bolts: 3/8"



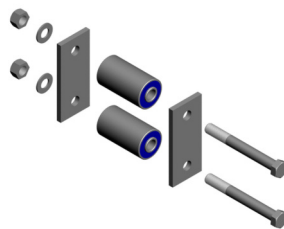
RM46-63471 Radiator Isolator

Replaces: Freightliner
BCD 28721-1, BCD 28847-1
FL70, FL80 Series Trucks
Length: 3 3/4"
Width: 3 5/8"
Thickness: 1 3/16"
Bolts: 1/2"



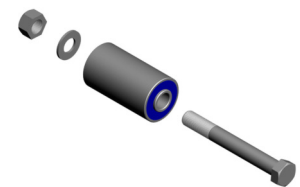
SK46-10800 Spring Eye Shackle Kit

Replaces: Freightliner
680-322-00-20, 680-322-01-05,
680-322-03-01
MB; FL 60/70/80; 106 Business
Class; Century Class 4" Spring
Contains:
(2) SP46-52800 Bushings
(2) Sidebars (2) Bolts
(2) Washers (2) Locknuts
ID: 13/16"
OD: 2 1/4"
Length: 4"
Rear of front (hanger not included)
Install Tool: PT99000



SK46-10900 Spring Eye Bushing Kit

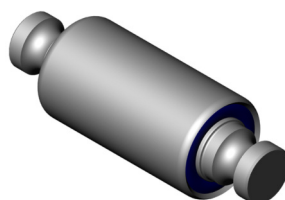
Replaces: Freightliner
680-322-01-05
MB; FL 60/70/80; 106 Business
Class; Century Class 4" Spring
Contains:
(1) SP46-52800 Bushing
(1) Bolt (1) Washer (1) Locknut
ID: 13/16"
OD: 2 1/4"
Length: 4"



Front of front
Install Tool: PT99000

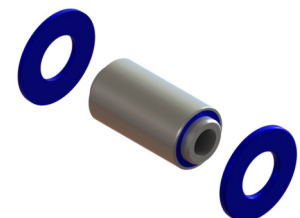
SP46-11023 Spring Eye Bushing

Replaces: Freightliner
16-14603-000, 16-17194-000,
16-17770-000, 16-18023-000
Heavy Duty Front 4" Wide
Springs; FL; Airtek;
M2 Business Class
OD: 2 1/4"
Length: 4 1/8"
Outer Sleeve
Pin: 5 3/8" c-c
Pin OD: 1 1/4"



SP46-11473 Spring Eye Bushing

Replaces: Freightliner
16-16473-000
M2 Business Class (3"eye/slipper
springs)
Contains:
(1) Spring Eye Bushing
(2) Polyurethane Washers
ID: 3/4"
OD: 1 3/4"
Length: 3 9/16"

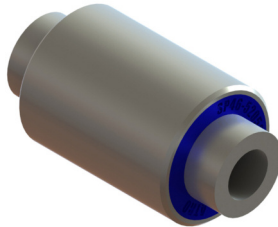


Install Tool: PT43-53200

FREIGHTLINER - Continued

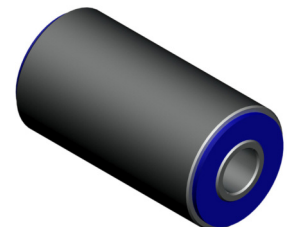
SP46-52050 Spring Eye Bushing

Replaces: Freightliner
A6803220050,
MBT A6803220050
FC70; FL50; FL60; FL70; M2 106
ID: 13/16"
OD: 2 1/4"
Length: 4 1/4"



SP46-52800 Spring Eye Bushing

Replaces: Freightliner
680-322-01-05 , 680-322-01-50
MLB/FL 60/70/80/106;
Business Class; Century Class
ID: 20mm
OD: 2 1/4"
Length: 4"



Install Tool: PT99000

TR46-41000 Torque Rod

Replaces: Freightliner
16-15632-000, 16-18972-000
Airliner Suspension
Length: 24 3/16" c-c



Contains: TS38000/TS38000

Heavy Duty

TR46-41002 Torque Rod, Small Eye

Replaces: Freightliner
16-16749-002, 16-18972-000,
681-326-72-16
FAS II
Length: 24 5/16" c-c



Contains: TS00-22500/TS00-22500

TR46-41316 Torque Rod, Small Eye

Replaces: Freightliner
16-16749-000, 681-326-6316
FAS II
Length: 22 7/8" c-c



Contains: TS00-22500/TS00-22500

TR46-41716 Torque Rod, Small Eye

Replaces: Freightliner
16-16749-001, 681-326-6716
FAS II
Length: 23 15/16" c-c



Contains: TS00-22500/TS00-22500

TR55-41117 Torque Rod, Small Eye

Replaces: Freightliner
16-10420-000, IPC-927180
FH34A-44A Four Spring
Length: 18 1/8" c-c



Contains: TS00-22500/TS00-22500

TR59-41150 Torque Rod

Replaces: Freightliner
681-326-70-16
Length: 25" c-c



Contains: TS38000/TT38000

FREIGHTLINER - Continued

TR59-41375 Torque Rod

Replaces: Freightliner
6813262065
Length: 24" c-c

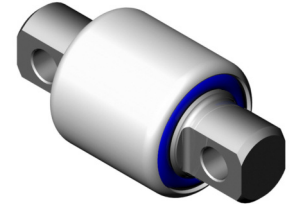
Contains: TS38000/TS38000



TS34000 Torque Rod Bushing

Replaces: Freightliner
151087-148
FH34-38 (4" Spring)
OD: 2 17/32"
Length: 4 3/8"
Bolt hole 5/8"

Install Tool: PT00-52600

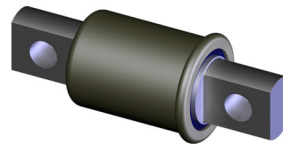


UB20500-OS Spring Pivot Bushing-Oversized

Replaces: Freightliner
681-325-01-50
OD: 2.56"
Length: 5.65"
Bolt Hole: 3/4"

High Confinement; Anti-Walk

For Oversized Spring Eyes ONLY



UB20500-OS w/ ROTATING PIN

OVERSIZED, ANTI-WALKING
.060" OVERSIZED BUSHING
ADDRESSES GAP IN MOST ENLARGED EYES.

ONE-YEAR WARRANTY ON THE OVERSIZED BUSHING.

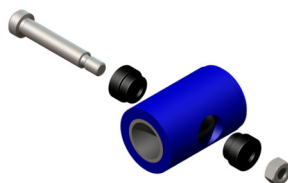
FULLER TRANSMISSION

MS99-63399 Shifter Isolator Bushing Kit

Replaces: Fuller Transmission
21244, 23311, K3399, K-3399
Contains:

- (1) Shifter Isolator Bushing
- (2) Step Bushings
- (1) Shoulder Bolt
- (1) Lock Nut
- ID: .84"
- OD: 1 1/2"
- Length: 2.3"

Removal Tool: PT99-63399

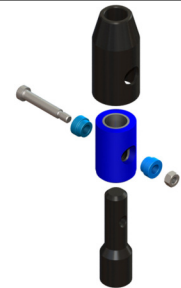


MS99-63794 Transmission Isolator Kit

Replaces: Fuller Transmission S1794
Transmission Add-On
Contains:

- (1) Shifter Isolator Bushing
- (2) Step Bushings
- (1) Shoulder Bolt
- (1) Lock Nut
- (1) Upper Adapter
- (1) Lower Adapter

Removal Tool: PT99-63399



HEIL

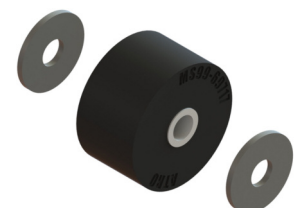
BP99-65535 Bumper/Arm Stop

Replaces: Heil 1411535
Half Pack®
Length: 9 7/8"
Height: 2 13/16"
Width: 4 1/2"
Bolt Hole: 5/8"
Bolt Holes: 5" c-c



MS99-69717 Grabber Assembly Roller

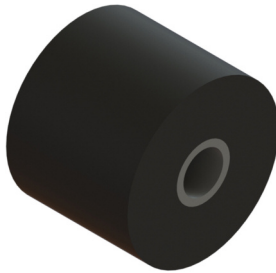
Replaces: Heil 620717
MultiPack SL
Contains:
(1) Roller Bushing
(2) Washers
ID: 1/2"
OD: 2 1/2"
Length: 1 7/16"



HEIL - Continued

MS99-69804 Roller Gripper

Replaces: Heil 620804
OD: 2 1/2"
Length: 2"
ID Bolt Size: 5/8"



BETTER THAN RUBBER

- ATRO's Rotating Pin
 - Reduces Inventory - No Clcking
 - Eliminates Bushing Wind-up
 - Eases Installation
- Parts Impervious to Chemical Attack

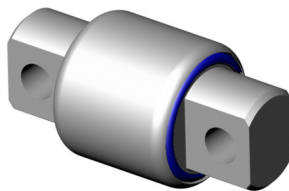


HENDRICKSON

AT33501 Torque Rod Bushing

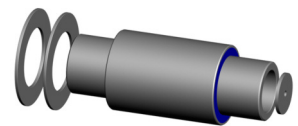
Replaces: Hendrickson 48304
RT650
OD: 3 1/2"
Length: 5 1/4" c-c
Bolt Hole: 15/16"

Install Tool: PT48-52000



CB38011 Center Bushing Kit

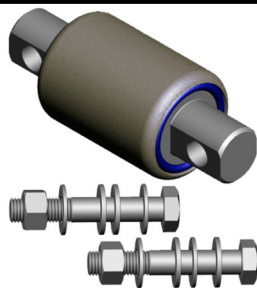
Replaces: Hendrickson 22282,
22282-000L
380-440 Series, Model 403
Contains:
(1) Bushing
(2) TW38000 thrust washers
(1) EP38000 loose end plug
Small OD: 3 1/2"
Large OD: 4 3/4"
Length: 12"



Weld plugs using electric welder only.
Install Tool: PT30000.

EB50-21013 Bar Pin Bushing Kit

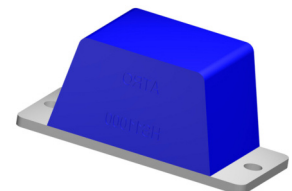
Replaces: Hendrickson 3401388,
50150000, 50160000, 34013-87
AR,R,RT,RTE,RT2,
RTE2,RU,RUE,RS, HN,Haulmaax
Series Suspensions
Contains: (1) Bushing (2) Bolts
(2) Nuts (4) Shims (4) Washers
Large OD: 4 3/8"
Length: 8 1/2" c-c
1 1/16" bolt holes



Install Tool: PT50-21013
Removal Tool: PT50-51013

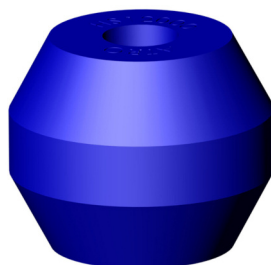
HS11000 Jounce Stop

Replaces: Hendrickson 49395,
49395000, 49395-000
HN Series 460
Length: 4 3/4"
Height: 2 1/8"
Width: 2 1/16"



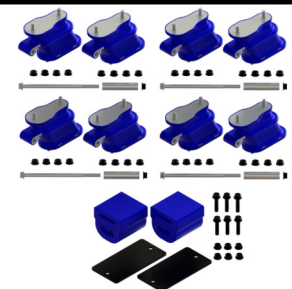
HS12000 Rebound Spring

Replaces: Hendrickson 48570,
48570000, 48570-000
HN Series 460
Large OD: 2 13/16"
Height: 3 5/16"



KT50-25002 Suspension Kit

Replaces: Hendrickson
64179-002 bolster
64179-037 bolster
65743-000 bolster
65902-004 spring & shims
Haulmaax®
Contains:
(4) LP50-24179;
(1) LP50-24902



HENDRICKSON - Continued

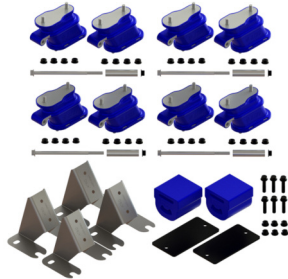
KT50-25003 Suspension Kit

Replaces: Hendrickson
64179-002 bolster
64179-037 bolster
64890-000 wear plate
65743-000 bolster
65902-004 spring & shim

Haulmaax®

Contains:

- (4) LP50-24179
- (1) LP50-24902
- (1) MS50-29891

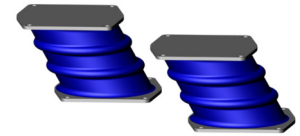


LP50-24000 Bolster Spring (set of 2)

Replaces: Hendrickson 49377,
49377000, 60879000L
HN Series 402/460/462

Contains:

- (2) Bolster Springs



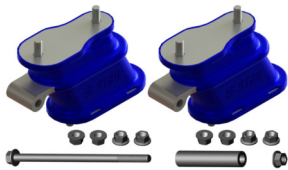
LP50-24179 Bolster Spring Kit

Replaces: Hendrickson
64179-002 (non-tie bolt design),
64179-037

Haulmaax® (all models)

Contains: (2) Bolster Springs

- (1) Spacer (1) Flange Bolt
- (9) Flange Nuts



One year warranty when only bolster springs are installed.
Must replace bar pin end bushings, torque rod bushings & all
bolster springs for 3 year warranty on bolster springs.
Warranty void if less than 8 ATRO bolster springs are
installed.

LP50-24745 Progressive Load Spring Kit

Replaces: Hendrickson
60961-745, 60961-745
Haulmaax®

Contains:

- (1) LP50-24778
- (3) Bolts
- (3) Locknuts

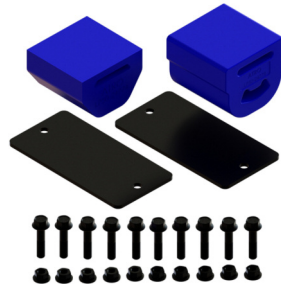


LP50-24746 Progressive/Auxiliary Load Spring Kit

Replaces: Hendrickson
60961-746, 60961-746
Haulmaax®

Contains:

- (1) Auxiliary Load Spring
- (1) Progressive Load Spring
- (2) MS50-29791
- (10) Bolts
- (10) Locknuts



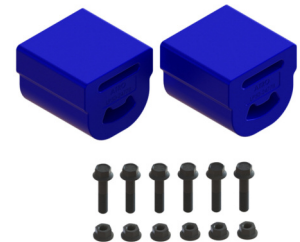
For Weight Bias Vehicles

LP50-24747 Progressive Load Spring Kit

Replaces: Hendrickson
60961-747
Haulmaax®

Contains:

- (2) LP50-24778
- (6) Bolts
- (6) Locknuts



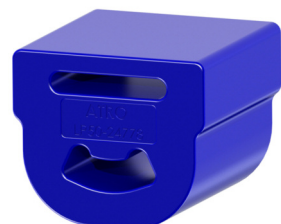
LP50-24778 Progressive Load Spring

Replaces: Hendrickson 67778/C,
67778/C, 67778-000, 67778-000
Haulmaax®

Length: 5"

Height: 4 1/4"

Width: 5"

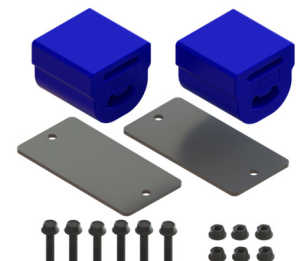


LP50-24902 Progressive Load Spring Kit

Replaces: Hendrickson
65902-004
Haulmaax®

Contains:

- (2) LP50-24778
- (2) MS50-29791
- (6) Bolts
- (6) Locknuts



HENDRICKSON - Continued

LP50-24974 Auxiliary Spring Kit

Replaces: Hendrickson 641794,
60314000, 64179004

Contains:

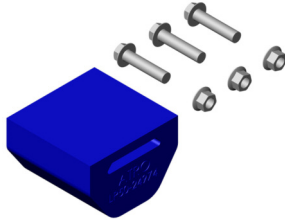
(1) Auxiliary Spring Pad (3) 1/2 x
2 1/4" bolts

(3) 1/2" locknuts

Length: 4 13/16"

Height: 3 5/16"

Width: 5"



Bolts and nuts only required for Haulmaax application.
4/96-8/98 & 9/98-11/00 models only if previously
retro-fitted with new style pad with shims.

MS50-29791 Auxiliary Shim

Replaces: Hendrickson 60791000

Haulmaax®

Length: 9 1/2"

Width: 4 3/4"

Thickness: 1/4"



MS50-29890 Wear Plate

Replaces: Hendrickson

64890-000

Haulmaax®



MS50-29891 Wear Plate (set of 4)

Replaces: Hendrickson

64890-000 single

Haulmaax®



SK27175 Torque Rod Kit

Replaces: Hendrickson

Contains:

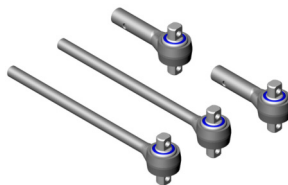
(2) TR71000

(2) TR75000

Bolt hole 5/8"

Finished length up to 27"

Bushings included are TS38000



TR50-41111 Torque Rod, Small Eye

Replaces: Hendrickson 484111

E4; HA

Length: 15 13/16" c-c

Contains: TS00-22500/TS00-22500



TR50-41112 Torque Rod, Small Eye

Replaces: Hendrickson 484112

E4

Length: 21 15/16" c-c

Contains: TS00-22500/TS00-22500



TR59-41150 Torque Rod

Replaces: Hendrickson

62350-635

Length: 25" c-c

Contains: TS38000/TT38000



HENDRICKSON - Continued

TR59-41375 Torque Rod

Replaces: Hendrickson
62000-610
Length: 24" c-c

Contains: TS38000/TS38000



TR62-41243 Torque Rod

Replaces: Hendrickson
62000-615
Length: 24 1/4" c-c

Contains: TS38000/TS38000



TR62-413M3 Torque Rod

Replaces: Hendrickson 3226713
Length: 20" c-c

Contains: TS38000/TS38000



TR75-41108 Torque Rod

Replaces: Hendrickson
62000-650
Length: 25 9/16" c-c

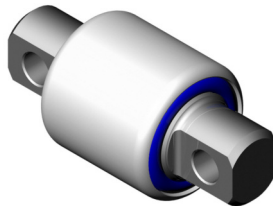
Contains: TS38000/TS38000



TS34000 Torque Rod Bushing

Replaces: Hendrickson 44694
340 Series, Model 343
OD: 2 17/32"
Length: 4 3/8"
Bolt hole 5/8"

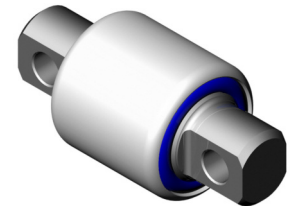
Install Tool: PT20000



TS38000 Torque Rod Bushing

Replaces: Hendrickson 44695,
64400-002L, 66649-002
340-520 Series, Model 343, 403,
463, 503, 523
OD: 2 3/4"
Length: 4 3/8" c-c
Bolt holes 5/8"

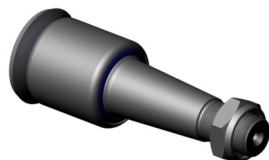
Install Tool: PT59-59100 and
Removal Tool: PT00-52100



TT38000 Torque Rod Bushing

Replaces: Hendrickson 44697,
64400-004L, 66649-004
380-440 Series, Model 403
OD: 2 3/4"
Length: 8 1/16"
Stud 1 1/4-12"

Install Tool: PT59-59100 and
Removal Tool: PT00-52100



ATRO'S ROTATING PIN

- REDUCES INVENTORY - NO CLOCKING
- ELIMINATES BUSHING WIND-UP
- EASES INSTALLATION

Parts Impervious to Chemical Attack

INTERNATIONAL

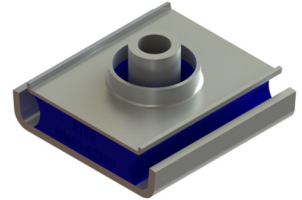
HL55-64C91 Hood Latch Kit

Replaces: International
16899930C91
12" Old Style Hood Latch



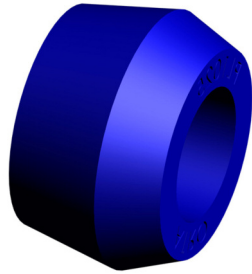
MM55-623C3 Motor Mount, Lower (Front)

Replaces: International
1664723C1, 1664723C2,
1664723C3, 1664730C7,
20147772C2
ID: 5/8"
Length: 4"
Width: 4 1/16"



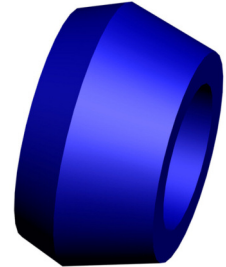
PL1025 Shock Bushing

Replaces: International 140149
ID: 3/4"
Small OD: 1 7/16"
Large OD: 1 9/16"
Length: 7/8"



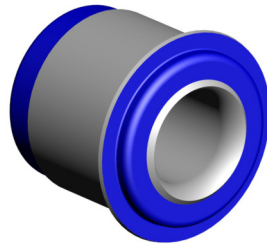
PL1026 Shock Bushing

Replaces: International 401754
ID: 1 1/16"
Small OD: 1 1/2"
Large OD: 1 7/8"
Length: 1"



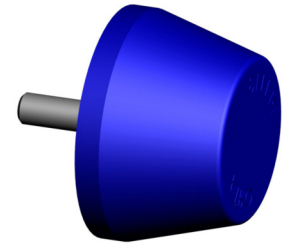
PL1048 Motor Mount

Replaces: International
503579C1, 507569C91
ID: 1 9/16"
Small OD: 3"
Large OD: 3 7/16"
Length: 3 1/8"



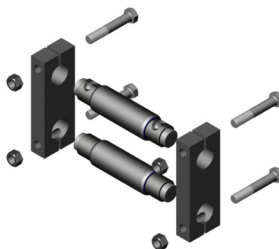
PL1113 Hood Bumper

Replaces: International
472697C1
Large OD: 2 5/16"
Length: 1 3/8"
Thread Size: 5/16" 18 UNC



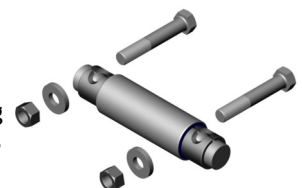
SK55-10000 Spring Eye Shackle Kit

Replaces: International 10651-H,
1661976C3, 1664223C1,
1664976C3, 1680034C1,
3511254C1, 444097C1, 44409-C1
Heavy S Series; 3000/4000/7000
Series (Cast Hangers)
Contains: (2) SP00-11561 Bushings
(2) Sidebars (4) Bolts (4) Locknuts
OD: 1 1/2"
Length: 4"
Rear of front
Install Tool: PT00-53000



SK55-10100 Spring Eye Bushing Kit

Replaces: International
1661976C3, 3511254C1,
444097C1, 44409-C1
Heavy S Series;
3000/4000/7000 Series
Contains: (1) SP00-11561 Bushing
(2) Bolts (2) Washers (2) Locknuts
OD: 1 1/2"
Length: 4"
Pin: 5 1/32" c-c
Front of front
Install Tool: PT00-53000



INTERNATIONAL - Continued

SP00-11561 Spring Eye Bushing

Replaces: International
10651H bushing,
1661976C3 pin,
1680034C1 bushing,
44409C1 bushing
Heavy S Series;
3000/4000/7000 Series
OD: 1 1/2"
Length: 4"
Pin: 5 1/32" c-c



Front of front; Rear of front
Install Tool: PT00-53000

TR55-41117 Torque Rod, Small Eye

Replaces: International
3581271C1, 588117C91
Corporate Four Spring
Length: 18 1/8" c-c



Contains: TS00-22500/TS00-22500

TR55-41118 Torque Rod, Small Eye

Replaces: International
2504006C91, 588118C91
Corporate Four Spring (rear axle)
Length: 21 15/16" c-c



Contains: TS00-22500/TS00-22500

TR55-418C1 Torque Rod

Replaces: International
3548381C1, 3580088C1,
4C4Z4612AA, 501565C2
Corporate Air
Length: 25 3/8" c-c



Contains: TS38000/TS38000

TR59-41375 Torque Rod

Replaces: International
1661925C91
Length: 24" c-c



Contains: TS38000/TS38000

TR59-41376 Torque Rod

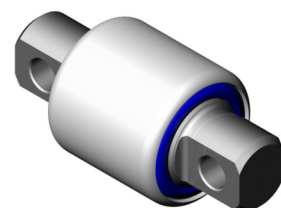
Replaces: International
3581270C1
Length: 24" c-c



Contains: TS38000/TT38000

TS34000 Torque Rod Bushing

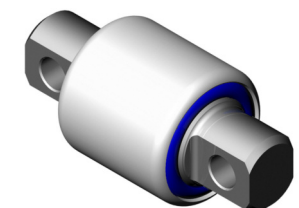
Replaces: International
1693060C1
Corporate Four Spring,
8100/9200 Single Axle
OD: 2 17/32"
Length: 4 3/8"
Bolt hole 5/8"



Install Tool: PT00-52600

TS38000 Torque Rod Bushing

Replaces: International
1693061C1
Corporate Four Spring,
8100/9200 Single Axle,
Corporate Air
OD: 2 3/4"
Length: 4 3/8" c-c
Bolt holes 5/8"



Install Tool: PT59-59100 and
Removal Tool: PT00-52100

ATRO

POLYURETHANE • SOLUTIONS



ATRO'S POLYURETHANE IS BETTER THAN RUBBER



CHEMICALLY RESISTANT

Impervious to Oil, Grease, Brine,
Cleaning Solvents, Hydraulic
Fluids and Diesel Fuel
Rubber Deteriorates



11 PROPRIETARY FORMULAS

Engineered to Function
Absorbs shock or
transfers Energy
Exceeds OE Specs
Longer Lasting Parts



STRONGER MATERIAL

2-5 Times Stronger
Rebound & Compression
Tensile & Tear Strength
Elongation Properties
Ranging Durometer

PROVIDING PEAK PERFORMANCE & IMPROVING RIDE QUALITY



TORQUE ROD FINDER

TORQUE-ROD.COM

1. IDENTIFY THE BUSHING TYPES
2. ENTER THE C-C LENGTH
3. INSTANT RESULTS

COMMITTED TO QUALITY

BETTER TORQUE RODS WITH ATRO'S ROTATING PIN



Reduces Parts
Inventory



Easier Installation,
No Clacking



Eliminates
Bushing Wind-up



Crimped and Bonded
Outer Sleeve

ENGINEERED | DURABLE | RELIABLE

ATROBUSHING.COM | 1.800.325.6114



KENWORTH

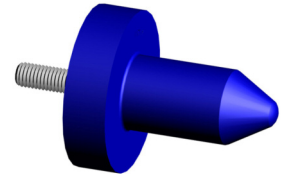
HL59-64107 Hood Latch

Replaces: Kenworth K147-107,
K147C106
W900B, T600A (1987-2005)



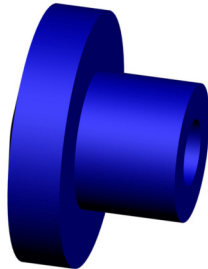
PL1011 Hood Pin

Replaces: Kenworth K179-528,
K179D450
Small OD: 1 1/2"
Large OD: 3 1/4"
Length: 4 1/8"
Thread size 1/2" - 13



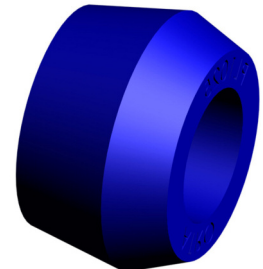
PL1013 Motor Mount

Replaces: Kenworth K066-229,
M700
ID: 13/16"
Small OD: 2 1/16"
Large OD: 3 3/4"
Length: 2 5/8"



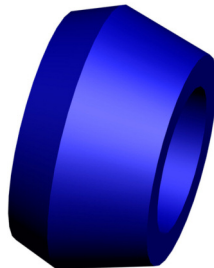
PL1025 Shock Bushing

Replaces: Kenworth 5316702
ID: 3/4"
Small OD: 1 7/16"
Large OD: 1 9/16"
Length: 7/8"



PL1026 Shock Bushing

Replaces: Kenworth 73D2002
ID: 1 1/16"
Small OD: 1 1/2"
Large OD: 1 7/8"
Length: 1"



SW59-29000 Sway Bar Assembly

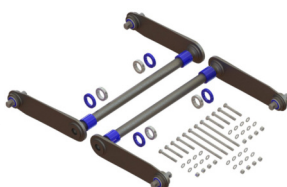
Replaces: Kenworth C65-1000,
C65-1013
Airglide 200/400/460/690
Contains:
(1) Swaybar
(2) End Bushings
(2) Wrap Bushings
Large OD: 58mm (bar)"
Length: 19 1/2" (arm)
52 inch axle spacing



Both swaybars must be replaced to be covered under warranty.

SW59-29000-KIT Sway Bar Complete Conversion Kit

Replaces: Kenworth
Bar Only: C65-1000, C65-1013
AG400
Contains: (2) Swaybars
(4) End Bushings (4) Wrap Bushings
(4) Thrust Bushings (4) Shaft Collars
(1) Hardware Kit
Large OD: 58mm (bar)"
Length: 19 1/2" arm
52 inch axle spacing



Both swaybars must be replaced to be covered under warranty.

TR00-41001 Torque Rod, Small Eye

Replaces: Kenworth
C65-6000-001, C65-6011-001
Airglide 380
Length: 23 3/4" c-c



Contains: TS00-22500/TH00-22500

KENWORTH - Continued

TR00-41009 Torque Rod, Small Eye

Replaces: Kenworth C65-6002,
C65-6009
Airglide 380
Length: 25 9/16" c-c

Contains: TS00-22500/TS00-22500



TR00-41600 Torque Rod, Small Eye

Replaces: Kenworth
C65-6000-002, C65-6011-002
Airglide 380
Length: 24 11/16" c-c

Contains: TS00-22500/TH00-22500



TR59-41150 Torque Rod

Replaces: Kenworth 925150
Airglide 100
Length: 25" c-c

Contains: TS38000/TT38000



TR59-41375 Torque Rod

Replaces: Kenworth 944270,
K195-375
Airglide 100
Length: 24" c-c

Contains: TS38000/TS38000



TR59-41376 Torque Rod

Replaces: Kenworth 925031,
K195-376
Airglide 100
Length: 24" c-c

Contains: TS38000/TT38000



TR59-41474 Torque Rod

Replaces: Kenworth K195-472
(no bushing), K195-474
Airglide 200/400/460/690
Length: 19 3/4" c-c

Contains:
TS59-22400/TS59-22400

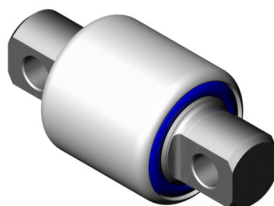
High articulation bushings
Bushings do NOT rotate
Heavy Duty



TS38000 Torque Rod Bushing

Replaces: Kenworth 227720
Airglide 100, Glide Ride, 4 Bag
Airglide "Big 6"
OD: 2 3/4"
Length: 4 3/8" c-c
Bolt holes 5/8"

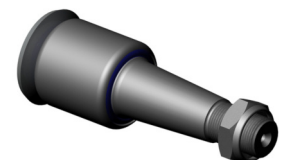
Install Tool: PT59-59100 and
Removal Tool: PT00-52100



TT38000 Torque Rod Bushing

Replaces: Kenworth 229610
Airglide 100
OD: 2 3/4"
Length: 8 1/16"
Stud 1 1/4-12"

Install Tool: PT59-59100 and
Removal Tool: PT00-52100



MACK

HM62-64362 Hood Rest Bracket, Right

Replaces: Mack 20802362

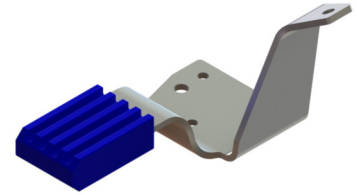
Use with HM62-64371



HM62-64371 Hood Rest Bracket, Left

Replaces: Mack 20802371

Use with HM62-64362



HM62-64M31 Pin Hood Guide

Replaces: Mack 25QM31

Small OD: 1 1/2"

Large OD: 3 5/16"

Length: 4 1/16"

Thread Size: 3/8"-24 UNF x 1 1/8"



KT62-62216-HT Insulator Kit

Replaces: Mack 204SX216

Mack Transmission

Contains:

(8) PL1017-HT

(8) Washers

(4) Bolts

(4) Locknuts



High Temperature Polyurethane

KT62-62389-HT Insulator Kit

Replaces: Mack 204SX389

Rear engine (Fuller transmission)

Contains:

(8) PL1017-HT

(8) Washers

(4) Bolts

(4) Locknut



High Temperature Polyurethane

MA10000 Trunnion Bushing

Replaces: Mack 10QK219P2,
10QK276

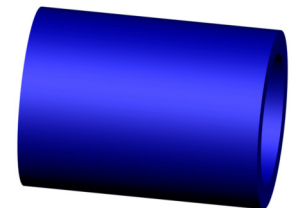
SS 34-44, 8 3/4" Trunnion,

ST34 Taper Leaf

ID: 3 1/2"

OD: 4 11/16"

Length: 6 5/16"



MA32000 Upper Insulator

Replaces: Mack 10QK32BP1

SS 55-65 Series,

SW/SWW Walking Beam

Length: 6 7/8"

Height: 3 3/4"

Width: 5 3/8"

Pin OD: 1 1/2"



MA36000 Lower Insulator

Replaces: Mack 21036254,

25125064, 10QK36B, 10QK388

SS 34-44 Series, SW/ST34 Series

OD: 1 3/4" (button)

Length: 6"

Height: 3 3/4"

Width: 6"



MACK - Continued

MA36500 Upper Insulator

Replaces: Mack 25121508,
10QK365A
SS 34/44/50, SW/ST34 Series
Length: 6"
Height: 2 1/2"
Width: 4 1/2"
Pin OD: 1 3/4"



MA37000 Upper Insulator

Replaces: Mack 25115012,
10QK370
SS 34/44/50, SW Series, SWS573
Length: 6"
Height: 3"
Width: 4 1/2"
Pin OD: 1 3/4"



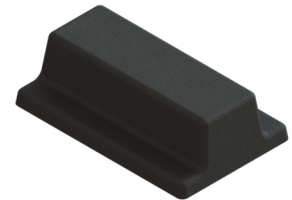
MA37200 Lower Insulator

Replaces: Mack 10QK372,
10QK389
SS 55/65, SW Series
Length: 7"
Height: 4 1/4"
Width: 7"
Pin OD: 2"



MS62-29246 Isulator Spacer Block

Replaces: Mack 25157862,
13QK246
Camelback, ST34, SW/SWW
Length: 4 3/4"
Height: 1 7/16"
Width: 3"



MS99-65038 Trailer Bumper

Replaces: Mack 120500
Length: 6"
Height: 3 1/2"
Width: 3"
Bolt Hole: 1/2"
Bolt Holes: 3" c-c

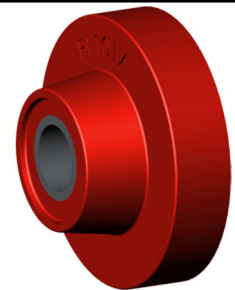


PL1017-HT Motor Mount

Replaces: Mack 20QL1118A,
20QL1175
ID: 3/4"
Small OD: 1 11/16"
Large OD: 3 3/16"
Length: 1 1/2"

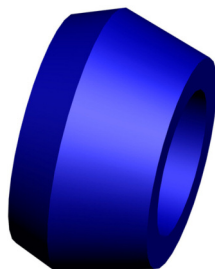
High Temperature Polyurethane

See KT62-62216-HT and
KT62-62389-HT for complete kits.



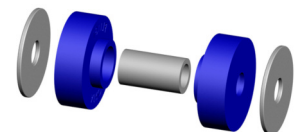
PL1026 Shock Bushing

Replaces: Mack 14QK136
ID: 1 1/16"
Small OD: 1 1/2"
Large OD: 1 7/8"
Length: 1"



PL1131 Motor Mount

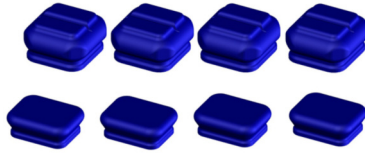
Replaces: Mack 20QL312M2
Contains:
(2) Bushings
(2) Washers
(1) Inner Sleeve
ID: 11/16"
Small OD: 1 3/8"
Large OD: 2 5/8"
Length: 2 3/16"



MACK - Continued

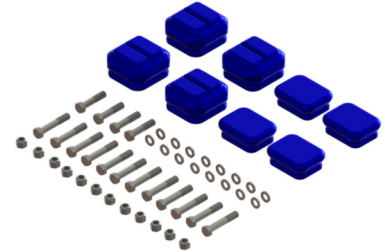
SK50340 Insulator Kit

Replaces: Mack
Contains:
(4) MA36000
(4) MA36500



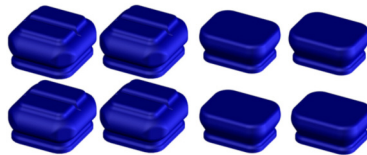
SK50340-HW Insulator Kit w/Hardware

Replaces: Mack
Contains:
(4) MA36000
(4) MA36500
(4) 7/8"-9UNC Bolts
(12) 7/8"-14UNC Bolts
(12) Locknuts
(16) Flat Washers



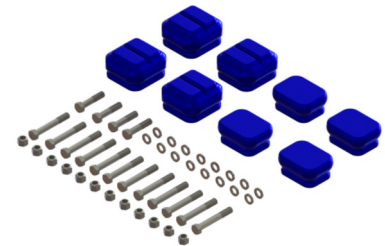
SK50380 Insulator Kit

Replaces: Mack
380-440 Series
Contains:
(4) MA36000
(4) MA37000



SK50380-HW Insulator Kit w/Hardware

Replaces: Mack
Contains:
(4) MA36000
(4) MA37000
(4) 7/8"-9UNC Bolts
(12) 7/8"-14UNC Bolts
(12) Locknuts
(16) Flat Washers



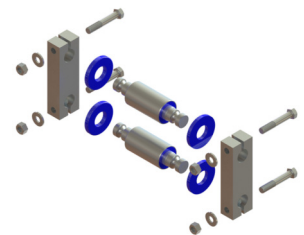
SK50650 Insulator Kit

Replaces: Mack
550-650 Series
Contains:
(4) MA32000
(4) MA37200



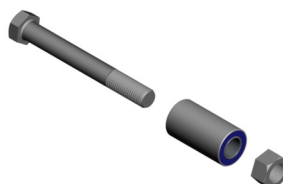
SK62-10600 Spring Eye Shackle Kit

Replaces: Mack 10QK254M ,
10QK254M , 22QK39301 ,
22QK39301
CH; CL; RW;
MH Series 3 1/2" Wide Spring
Contains:
(2) SP62-1154M Bushings
(2) Sidebars (4) Bolts
(4) Washers (4) Locknuts
OD: 1 7/8"
Length: 3 1/2"
Rear of front
Install Tool: PT00-53000



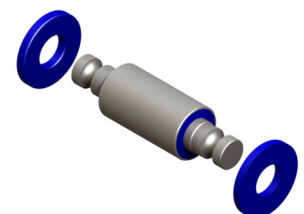
SK62-10700 Spring Eye Bushing Kit

Replaces: Mack 10QK253M,
10QK253M, 171AM8, 171AM8,
43RU297M, 43RU297M
CH; CL; RW;
MH Series 3 1/2" Wide Spring
Contains: (1) Spring Eye Bushing
(1) Bolt (1) Locknut
ID: 15/16"
OD: 1 7/8"
Length: 3 1/2"
Front of front
Install Tool: PT91000



SP62-1154M Spring Eye Bushing

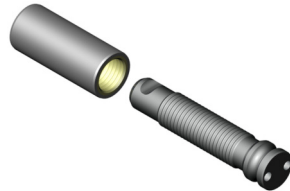
Replaces: Mack 10QK254M2 ,
10QK254M2
CH; CL; RW;
MH Series 3 1/2" Wide Spring
Contains:
(1) Spring Eye Bushing
(2) Polyurethane Shims
OD: 48 mm
Length: 88 mm
Pin: 139 mm c-c
Front of Front
Install Tool: PT00-53000



MACK - Continued

SP96-11026 Threaded Pin & Spring Eye Bushing Kit

Replaces: Mack 10QK3105M
VN Series; CXN (Vision)
Contains:
(1) Spring Eye Bushing
(1) Threaded Pin
OD: 45mm Bushing
Length: 105mm Bushing
Pin Groove: 142mm c-c



Install Tool: PT91118
Drive Tool: PT96-53100
Tool Handle: PT91500

TR59-41375 Torque Rod

Replaces: Mack 1RY39307P13,
5435-947794
Length: 24" c-c

Contains: TS38000/TS38000



TR62-41220 Torque Rod

Replaces: Mack 25174706,
17QF460P220
AL401LH, MAX Air 40
Length: 22" c-c

Contains: TS38000/TS38000



TR62-41243 Torque Rod

Replaces: Mack 25170833,
17QF261P23, 17QF352M2,
17QF460P243, 17QF473M4
Mack Air
Length: 24 1/4" c-c

Contains: TS38000/TS38000



TR62-413M2 Torque Rod

Replaces: Mack 25170832,
17QF460P210, 17QF473M2
Mack Air
Length: 21" c-c

Contains: TS38000/TS38000



TR62-413M3 Torque Rod

Replaces: Mack 25166077,
25170831, 17QF358, 17QF359,
17QF460P200, 17QF473M
Mack Air
Length: 20" c-c

Contains: TS38000/TS38000



TR62-413M4 Torque Rod

Replaces: Mack 17QF460P225,
17QF473M3
AL Air Suspension
Length: 22 1/2" c-c

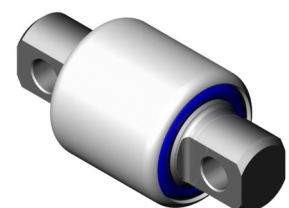
Contains: TS38000/TS38000



TS34000 Torque Rod Bushing

Replaces: Mack 1688-227710
ST34 Taper Leaf
OD: 2 17/32"
Length: 4 3/8"
Bolt hole 5/8"

Install Tool: PT00-52600

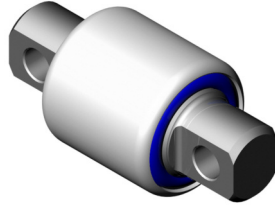


MACK - Continued

TS38000 Torque Rod Bushing

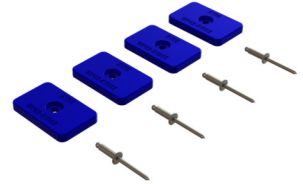
Replaces: Mack 1688-227720
SS 34/38, ST34 Taper Leaf
OD: 2 3/4"
Length: 4 3/8" c-c
Bolt holes 5/8"

Install Tool: PT59-59100 and
Removal Tool: PT00-52100



WP62-61003 Vibration Kit

Replaces: Mack 44-74,
4866KL3003, 4866-KL3003,
9343-6223
8182 cab tilt
Contains:
(4) Pads
(4) Blind Rivets
Length: 2 1/4" Pad
Height: 1/4" Pad
Width: 1 3/8" Pad
Rivet: 3/16" diameter x 1/2"

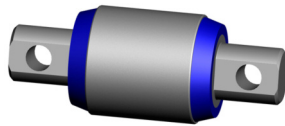


MCNEILUS

EB38651 Booster Cylinder Bushing

Replaces: McNeilus 183488
OD: 4 3/8"
Length: 8 1/2"
Bolt Hole: 1 1/16"

Install Tool: PT40000



MS99-65035 Bumper Pad

Replaces: McNeilus 602035
Universal Bumper Block (Front
Rear); Front Loader Waste Hauler
Length: 7 7/8"
Width: 6"
Bolt Hole Pattern:
5 1/2" x 3" x 1/2" (4)



MS99-65045 Bumper Pad (Severe Duty)

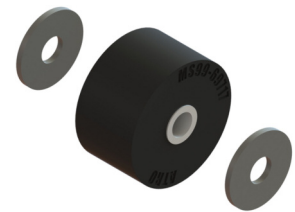
Replaces: McNeilus 602035
Various front load trash com-
pactor/waster hauler bumper
Length: 7 7/8"
Width: 6"
Bolt Hole Pattern:
5 1/2" x 3" x 1/2" (4)

Severe Duty



MS99-69717 Grabber Assembly Roller

Replaces: McNeilus 1108125
Contains:
(1) Roller Bushing
(2) Washers
ID: 1/2"
OD: 2 1/2"
Length: 1 7/16"



PB99-29937 Pivot Bushing Kit

Replaces: McNeilus 1106937
Contains:
(1) Polyurethane Bushing
(2) Snap Rings
(2) Washers
(2) Shims
OD: 4 7/16"
Length: 5 3/4"
Pin: 8 1/2"-11" c-c (9 3/4" c-c optimum)



CHEMICALLY
RESISTANT

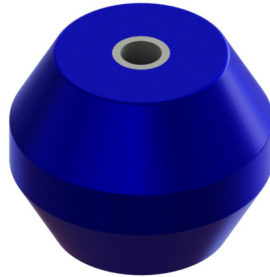
ATRO'S POLYURETHANE

- RESISTANT AGAINST: OIL,
GREASE, BRINE, CLEANING AGENTS
- RUBBER DETERIORATES

PETERBILT

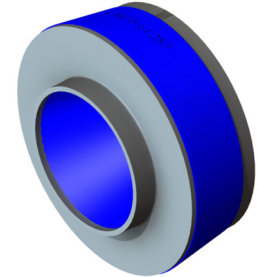
CM75-61055 Cab Mount

Replaces: Peterbilt 170-55
Model 320 (cab over) Waste
Trucks
ID: 1/2"
OD: 3 3/8"
Length: 2 3/4"



CM75-61257 Cab/Sleeper Mount

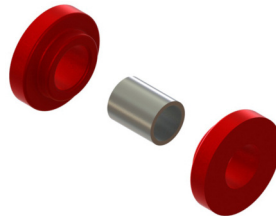
Replaces: Peterbilt 20-08257
Models (Unibilt) 357; 365; 378;
379; 385; 389
ID: 21/32"
OD: 1 13/16" (nipple)
Large OD: 3"
Height: 1 1/8"



Does not include hardware
See KT75-61257 for complete set
including all hardware & mounts needed to service one
mounting location

EM75-69096-HT Exhaust/Radiator Mount; Air-Air Bushing

Replaces: Peterbilt 13-03096
Upper Exhaust: 357; 375-379; 385
Pre 1995 Standard
OD: 3/4" (nipple)
Large OD: 1 1/16"
Height: 1/4" (flange)



High Temperature Polyurethane

Accepts 3/8" diameter fasteners (not included)

EM75-69656-HT Exhaust Bushing

Replaces: Peterbilt 14-14656
Models 357; 375 thru 379 & 385
ID: 3/8"
Small OD: 3/4"
Large OD: 1 1/4"
Length: 1 3/8"



High Temperature Polyurethane

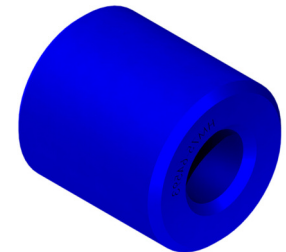
HL00-64001 Hood Latch

Replaces: Peterbilt L56-0001
Model 379
Length: 22.44" c-c



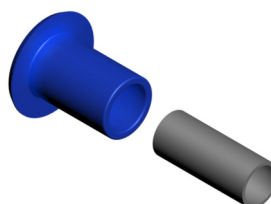
HM75-64593 Hood Roller

Replaces: Peterbilt 13-03593
Models 357; 375-379
ID: 5/8"
OD: 1 1/2"
Length: 1 5/8"



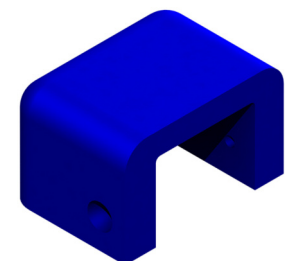
HM75-64726 Hood Mount Pivot Bushing

Replaces: Peterbilt
13-04726 pivot bushing,
13-04727 metal sleeve
Models 357; 367; 377 thru 379
ID: 3/4"
Small OD: 1"
Large OD: 1 11/16"
Length: 1 11/16"
Sleeve ID: 5/8"
Sleeve Length: 1 7/8"



HM75-65510 Hood Bumper

Replaces: Peterbilt 13-03510
Models 330; 357; 377; 379; 385
OD: 3/16" hole
Outside Length: 2 3/8"
Inside Length: 2"
Outside Height: 2"
Inside Height: 1 1/2"
Outside Width: 3 3/16"
Inside Width: 2"



PETERBILT - Continued

PL1013-HT Motor Mount

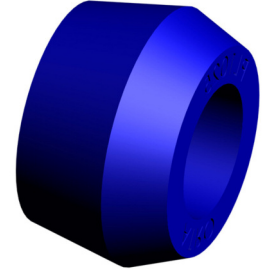
Replaces: Peterbilt 05-08969,
05-10103
ID: 13/16"
Small OD: 2 1/16"
Large OD: 3 3/4"
Length: 2 5/8"

High Temperature Polyurethane



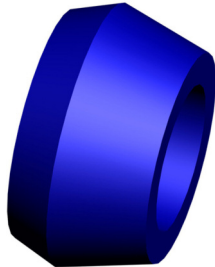
PL1025 Shock Bushing

Replaces: Peterbilt
ID: 3/4"
Small OD: 1 7/16"
Large OD: 1 9/16"
Length: 7/8"



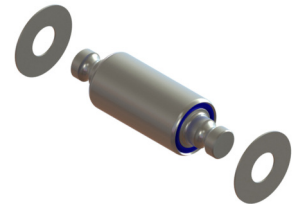
PL1026 Shock Bushing

Replaces: Peterbilt 02-00377
ID: 1 1/16"
Small OD: 1 1/2"
Large OD: 1 7/8"
Length: 1"



SP00-11013 Spring Eye Bushing

Replaces: Peterbilt B65-1013,
B65-6006
Late model
Contains:
(1) Spring Eye Bushing
(2) Washers
OD: 2 1/16"
Outer Sleeve Length: 4 1/16"
Pin Groove: 5 7/16" c-c



Install Tool: PT59-53000

TR00-41001 Torque Rod, Small Eye

Replaces: Peterbilt
C65-6000-001, C65-6011-001
Flexair
Length: 23 3/4" c-c

Contains: TS00-22500/TH00-22500



TR00-41009 Torque Rod, Small Eye

Replaces: Peterbilt C65-6002,
C65-6009
Flexair
Length: 25 9/16" c-c

Contains: TS00-22500/TS00-22500



TR00-41600 Torque Rod, Small Eye

Replaces: Peterbilt
C65-6000-002, C65-6011-002
Flexair
Length: 24 11/16" c-c

Contains: TS00-22500/TH00-22500



TR75-41059 Torque Rod

Replaces: Peterbilt 03-04059,
C65-6013, SS-219-117
Air Leaf & Air Trac
Length: 22 7/8" c-c

Contains: TS38000/TS38000



PETERBILT - Continued

TR75-41108 Torque Rod

Replaces: Peterbilt 943711,
03-05108
Peterbilt Low Mount Air Leaf
Length: 25 9/16" c-c

Contains: TS38000/TS38000



TR75-41327 Torque Rod

Replaces: Peterbilt
924175, 03-04327,
C65-6012-000010440 (Heavy Duty),
C65-6016-000010440, SS326-11
Air Trac
Length: 17 5/16" c-c

Contains: TS38000/TS38750



TR75-41781 Torque Rod, Small Eye

Replaces: Peterbilt 03-01764,
03-01781, 03-04839
Four Spring Tandem
Length: 19 1/8" c-c

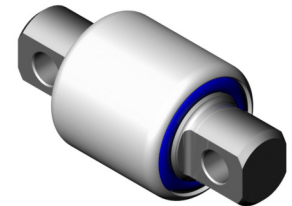
Contains: TS00-22500/TS00-22500



TS34000 Torque Rod Bushing

Replaces: Peterbilt
227710, 02-27710
*Air Leaf/Air Trac (lateral),
Low Mount Air Leaf*
OD: 2 17/32"
Length: 4 3/8"
Bolt hole 5/8"

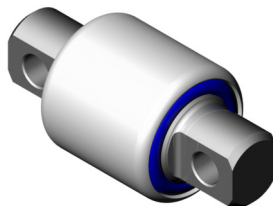
Install Tool: PT00-52600



TS38000 Torque Rod Bushing

Replaces: Peterbilt
227720, 02-27720
Air Trac (lower radial)
OD: 2 3/4"
Length: 4 3/8" c-c
Bolt holes 5/8"

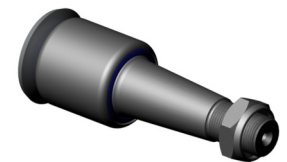
Install Tool: PT59-59100 and
Removal Tool: PT00-52100



TT38000 Torque Rod Bushing

Replaces: Peterbilt
229610, 02-29610
OD: 2 3/4"
Length: 8 1/16"
Stud 1 1/4-12"

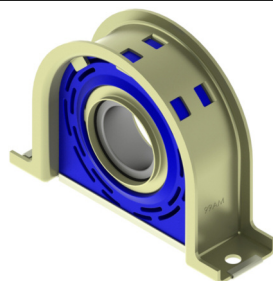
Install Tool: PT59-59100 and
Removal Tool: PT00-52100



SPICER

CR00-67825 Carrier Bearing Assembly

Replaces: Spicer 5003323,
2106611X
ID: 60mm (Bearing)
Length: 10"
Height: 7 1/4"
Width: 3"
Center Height: 3 1/4"
Bolt: 8 5/8" c-c
Bolt Size: 1/2"



ATRO'S CARRIER BEARING

- 3 YEAR WARRANTY
- RESISTANT TO CHEMICAL ATTACK
- COMPETITIVELY PRICED WITH RUBBER
- ZINC PLATED FRAME

STERLING TRUCK

TR13-41022 Torque Rod

Replaces: Sterling Truck IPC
924711
Length: 22" c-c

Contains: TS38000/TT38000



TR59-41375 Torque Rod

Replaces: Sterling Truck IPC
925030
Length: 24" c-c

Contains: TS38000/TS38000



TEREX MIXER

TR99-41149 Torque Rod

Replaces: Terex Mixer 17149
Length: 24" c-c

Contains: TS38000/TT34038



TR99-41388 Torque Rod

Replaces: Terex Mixer 19388
Length: 20" c-c

Contains: TS38000/TT34038



TR99-41428 Torque Rod

Replaces: Terex Mixer 19428
Length: 21 1/4" c-c

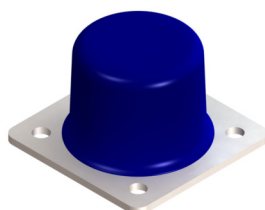
Contains: TS38000/TS38000



UNISORB

MS99-65100 Bump Stop

Replaces: Unisorb ANB50
Penpac dumpster grabbing device
Height: 1.63"
Base: 2 3/4" square; Hole
Pattern: 1.97" square
Bolt Size: 1/4"
Pad Diameter: 2"



ATRO's VIN-LESS TORQUE ROD

- ROTATING BUSHING PIN REDUCES INVENTORY
- EASY INSTALL TO LINE-UP BOLT HOLES

3 CLICKS FIND YOUR PARTS

TORQUE-ROD.COM



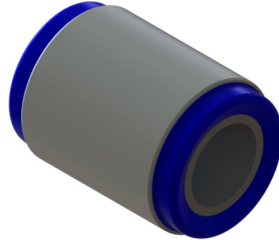
FINEST MADE TORQUE RODS

- BETTER MATERIAL WITH POLY
 - FORGE EYE
- MECHANICAL WELD
- BEST WARRANTY

VOLVO

CM13-61199 Cab Pivot Bushing

Replaces: Volvo 3081199,
66108-0006
ID: 1 1/8"
OD: 2 1/8"
Length: 2 29/32"
Outer Sleeve: 2 1/4"



HL00-64002 Hood Latch

Replaces: Volvo
8174018 catch only
AC, WA, WC, WG, WI (1991-2002)

Included in kits: HL46-64530,
HL46-64531, HL96-64018



HL96-64000 Hood Latch

Replaces: Volvo
8174018 catch only
AC, WA, WC, WG, WI (1991-2002)

Included in kits: HL96-64018



HL96-64018 Hood Latch Kit

Replaces: Volvo 8174018
AC, WA, WC, WG, WI (1991-2002)

Contains:
(1) HL00-64002
(1) HL96-64000

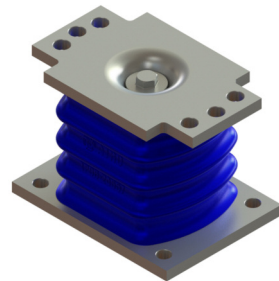


LP96-24657 Load Spring

Replaces: Volvo 1089501,
1577873, 1609657, 1629553,
20390836, 3090971, 8151413,
V1609657, V1629553

T-Ride

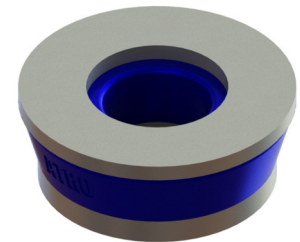
Height: 5 7/8"
Width: 5 7/8"
Bolt Size Top: 9/16"
Bolt Size Bottom: 1/2"
Top Bolt Pattern: 7 1/16" x 2
Base Bolt Pattern: 6 9/32" x 4 9/16" x 4



MM96-62002 Motor Mount, Front (Snubber)

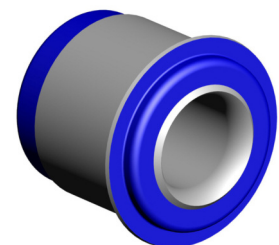
Replaces: Volvo 3081659,
12005-0002, 12005-3208

ID: 5/8"
OD: 2 3/4"
Thickness: 1"



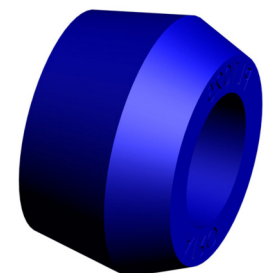
MM96-62657 Motor Mount

Replaces: Volvo 3081657
ID: 1 1/2"
OD: 3"
Length: 3"



PL1025 Shock Bushing

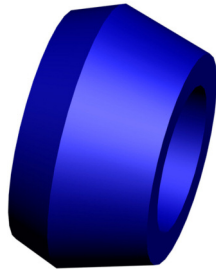
Replaces: Volvo V8057131
ID: 3/4"
Small OD: 1 7/16"
Large OD: 1 9/16"
Length: 7/8"



VOLVO - Continued

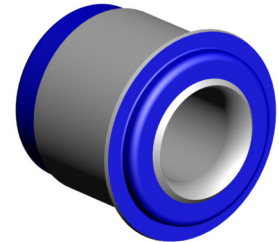
PL1026 Shock Bushing

Replaces: Volvo
ID: 1 1/16"
Small OD: 1 1/2"
Large OD: 1 7/8"
Length: 1"



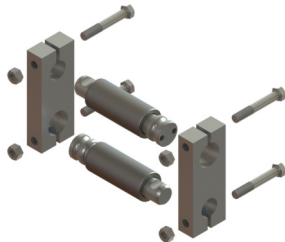
PL1048 Motor Mount

Replaces: Volvo 12004-0007
ID: 1 9/16"
Small OD: 3"
Large OD: 3 7/16"
Length: 3 1/8"



SK96-10200 Spring Eye Shackle Kit

Replaces: Volvo 1075723,
1075724, 1076334, V1075724
420/610/660/770 VN; VL Series
Four Spring
Contains:
(2) SP96-11026 Bushings
(2) Sidebars (4) Bolts (4) Locknuts
OD: 1 3/4"
Length: 4"



Rear of front
Install Tool: PT91118

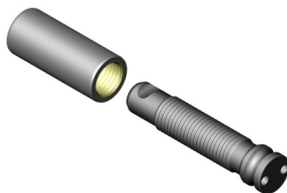
SK96-10300 Spring Eye Bushing Kit

Replaces: Volvo 1075723,
1075724, 1076334, V1075724
420/610/660/770 VN;
VL Series Four Spring
Contains:
(1) SP96-11026 Bushing
(2) Bolts
(2) Locknuts
OD: 1 3/4"
Length: 4"
Front of front
Install Tool: PT91118



SP96-11026 Threaded Pin & Spring Eye Bushing Kit

Replaces: Volvo 1075723 pin,
1075724 bushing, 1076334 pin,
20526026 bushing, 20747781 pin
VN series; Mack CXN (Vision)
Contains:
(1) Spring Eye Bushing, (1)
Threaded Pin
Bushing OD: 45mm
Bushing Length: 105mm
Pin Groove: 142mm c-c



Install Tool: PT91118
Drive Tool: PT96-53100
Tool Handle: PT91500

TR96-41068 Torque Rod

Replaces: Volvo 3187322,
35801-0068
Air Ride
Length: 22 1/8" c-c

Contains: TS38000/TS38000



TR96-41268 Torque Rod

Replaces: Volvo 943902,
8021378, 8028945, 8071851,
8074268
Volvo T-Ride
Length: 22 5/8" c-c

Contains: VS02000/VS02000

Heavy Duty



ATRO'S ROTATING PIN

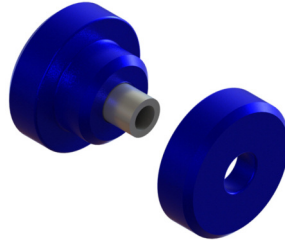
- REDUCES INVENTORY - NO CLOCKING
- ELIMINATES BUSHING WIND-UP
- EASES INSTALLATION

Parts Impervious to Chemical Attack

WESTERN STAR

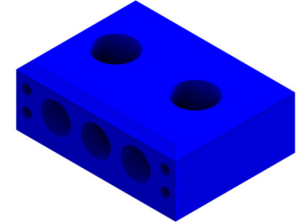
CM94-61875 Cab Mount (Front)

Replaces: Western Star
A18-66875-002
Model 6900
ID: 5/8"
Small OD: 2 1/4"
Large OD: 3 1/2"
Length: 2 7/8"



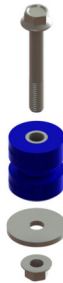
HM94-64438 Hood Mount

Replaces: Western Star
67009-3438
Length: 4"
Width: 3"
Thickness: 1 1/2"
Bolt: 3/8" or 7/16"
Bolt Holes: 2" c-c



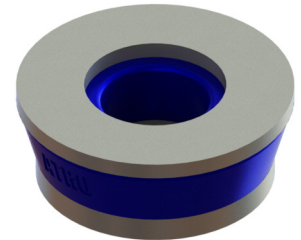
HM96-64442 Hood Mount Kit

Replaces: Western Star
67009-3442 bushing
Contains:
(1) MS99-62620 Bushing
(1) Bolt
(1) Flat Washer
(1) Locknut



MM96-62002 Motor Mount, Front (Snubber)

Replaces: Western Star
12005-002
ID: 5/8"
OD: 2 3/4"
Thickness: 1"



MM96-62401-HT Motor Mount

Replaces: Western Star
12004-3401
ID: 5/8"
Small OD: 1 27/32"
Large OD: 3"
Height: 1 3/16"

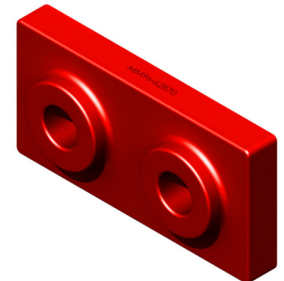
High Temperature Polyurethane



MM96-62870-HT Engine Mount (Upper Position)

Replaces: Western Star
04-9009997 hard,
12004-3402 soft
ID: 5/8"
OD: 1 7/8" (nipple)
Length: 6"
Height: 3/4"
Width: 3"

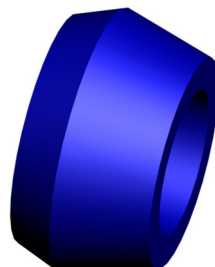
High Temperature Polyurethane



Must use with (2) PL1015-HT mounts
for lower position at same location

PL1026 Shock Bushing

Replaces: Western Star
ID: 1 1/16"
Small OD: 1 1/2"
Large OD: 1 7/8"
Length: 1"



TR13-41022 Torque Rod

Replaces: Western Star
35801-0033
Length: 22" c-c

Contains: TS38000/TT38000



WESTERN STAR - Continued

TR59-41376 Torque Rod

Replaces: Western Star
35801-3441
Length: 24" c-c

Contains: TS38000/TT38000



TR94-41458 Torque Rod

Replaces: Western Star
35801-3458
Length: 22 3/8" c-c

Contains: TH99-22101/TS38000



TR94-41514 Torque Rod

Replaces: Western Star
35801-3514 , IPC947-271
Length: 22 1/2" c-c

Contains:
TH99-22101/TH99-22101



TR94-41900 Torque Rod

Replaces: Western Star
35801-3459
Length: 23 1/8" c-c

Contains: TS38000/TS38000



ATRO Part Number: BP99-65535 Bumper/Arm Stop



- Saves Labor & Parts Spend
- 3-Year ATRO Warranty
- Rubber replaced monthly





Cross References

Heil:
141153

Waste Equipment:
30014-1535

ATRO DOMESTIC WARRANTY POLICY

ATRO products are covered by a **3-year parts warranty** with the following exceptions:

Small eye torque rods (2" ID)		2 year
Hendrickson pads (LP50 series)		1 year
Equalizer beams		1 year
Installation tools		no warranty

ATRO will replace defective product at no charge. Failure modes include polyurethane to metal debonding, loose fit of internal components or obvious signs of wear that will lead to premature failure under normal use.

Warranty is void if product condition indicates overloading or improper application. In addition, **MIXING ATRO PRODUCTS WITH RUBBER OR COMPETITIVE POLYURETHANE PRODUCTS WITHIN THE SAME APPLICATION VOIDS ALL WARRANTY.**

ATRO also offers a 1 year labor warranty provided the product is installed entirely onto the vehicle by an authorized ATRO installer, and that all ATRO products are used throughout the entire vehicle application. ATRO will reimburse labor charges to authorized distributors or installers at 75% of their published labor rates.

To file a warranty claim:

- 1) Please call ATRO customer service (800-325-6114) for approval and to obtain an RMA#.
- 2) Return product within 30 days along with a copy of the invoice or work order of the original installation to confirm the date of installation and ATRO products installed. Please reference the RMA#. The RMA will expire in 30 days.
- 3) The product, invoice/work order and RMA# should be returned to ATRO, 6 Bolte Lane, St. Clair MO 63077, ATTN: Warranty, freight prepaid, for inspection.

CELEBRATING 30 YEARS

ATRO

POLYURETHANE • SOLUTIONS

6 Bolte Lane
St. Clair, Missouri 63077 | U.S.A.
(800) 325.6114 | Fax (866) 920.2005
ATROBUSHING.COM



TORQUE RODS FOR ALL MAKES

THREE SIMPLE CLICKS

- 1 CHOOSE THE BUSHING
- 2 CHOOSE THE C-TO-C LENGTH
- 3 FIND YOUR TORQUE ROD

GROW YOUR BUSINESS WITH COMPLETE TORQUE RODS

BETTER RODS WITH ROTATING BUSHING

- REDUCES PARTS INVENTORY
- EASIER INSTALLATION, NO CLOCKING
- ELIMINATES RUBBER WIND-UP
- CRIMPED AND BONDED OUTER SLEEVE
- VIN-LESS IDENTIFICATION